

# Facilities, Planning and Construction

## April 22, 2019



*Every Student Future Ready.*

# Planning

- Aquatic Center
- NHS CTE, PAC, and Softball/Baseball fieldhouse
- Eaton 3 Story Addition
- Fine Arts Addition/Renovations for 5 Middle School

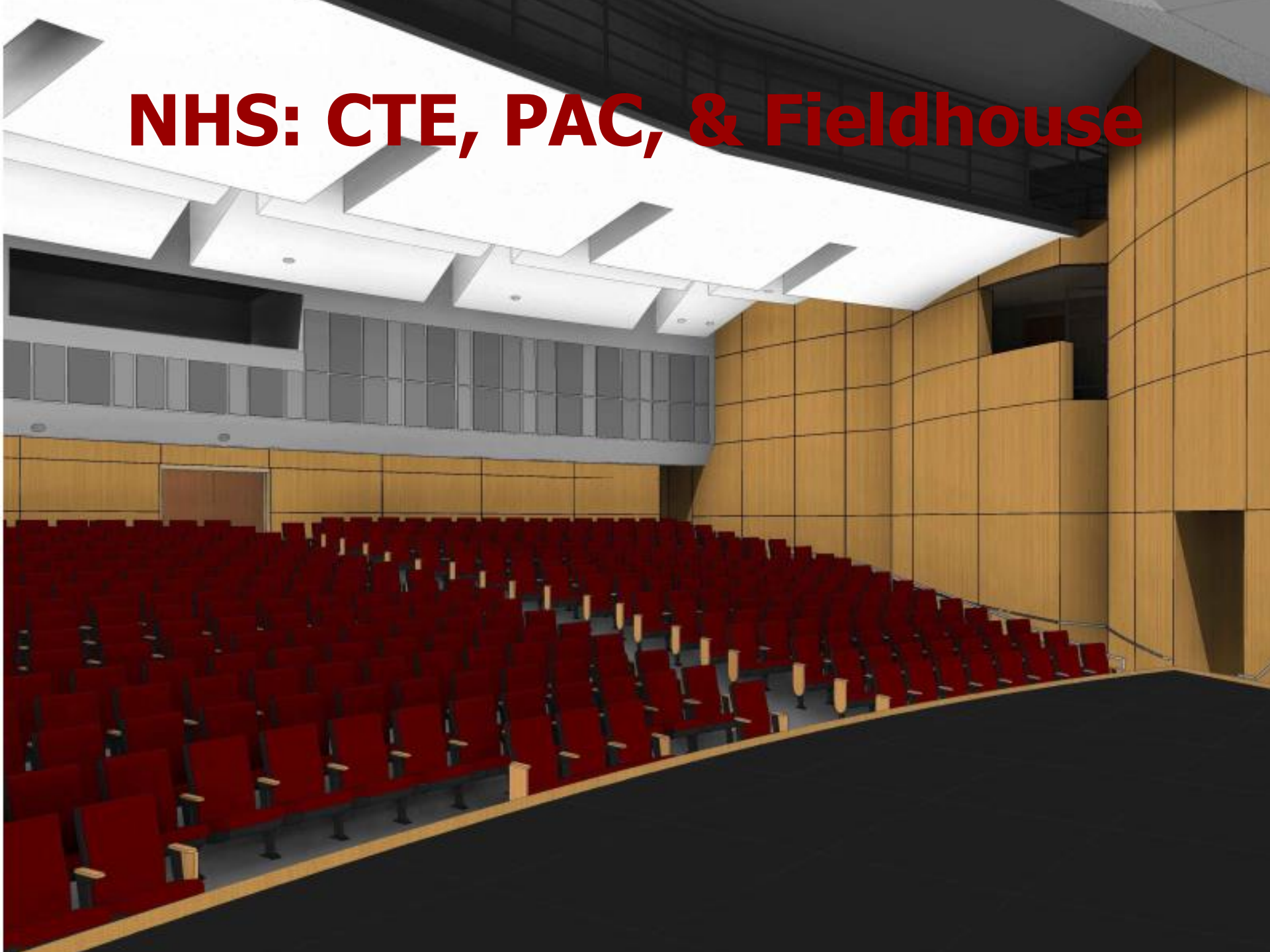
# Aquatic Center



*Every Student Future Ready.*



# NHS: CTE, PAC, & Fieldhouse





# Eaton Addition





-  CORE CLASSROOMS
-  SUPPORT ACADEMIC
-  ADMIN.
-  PUBLIC SPACE
-  SERVICE



# Middle School Fine Arts Additions

- Chisholm Trail and Pike

- Ensemble Room
- Black Box
- Stage Lighting Upgrade

- Medlin

- Ensemble Room
- Black Box
- Stage Lighting Upgrade
- **Classroom Addition**

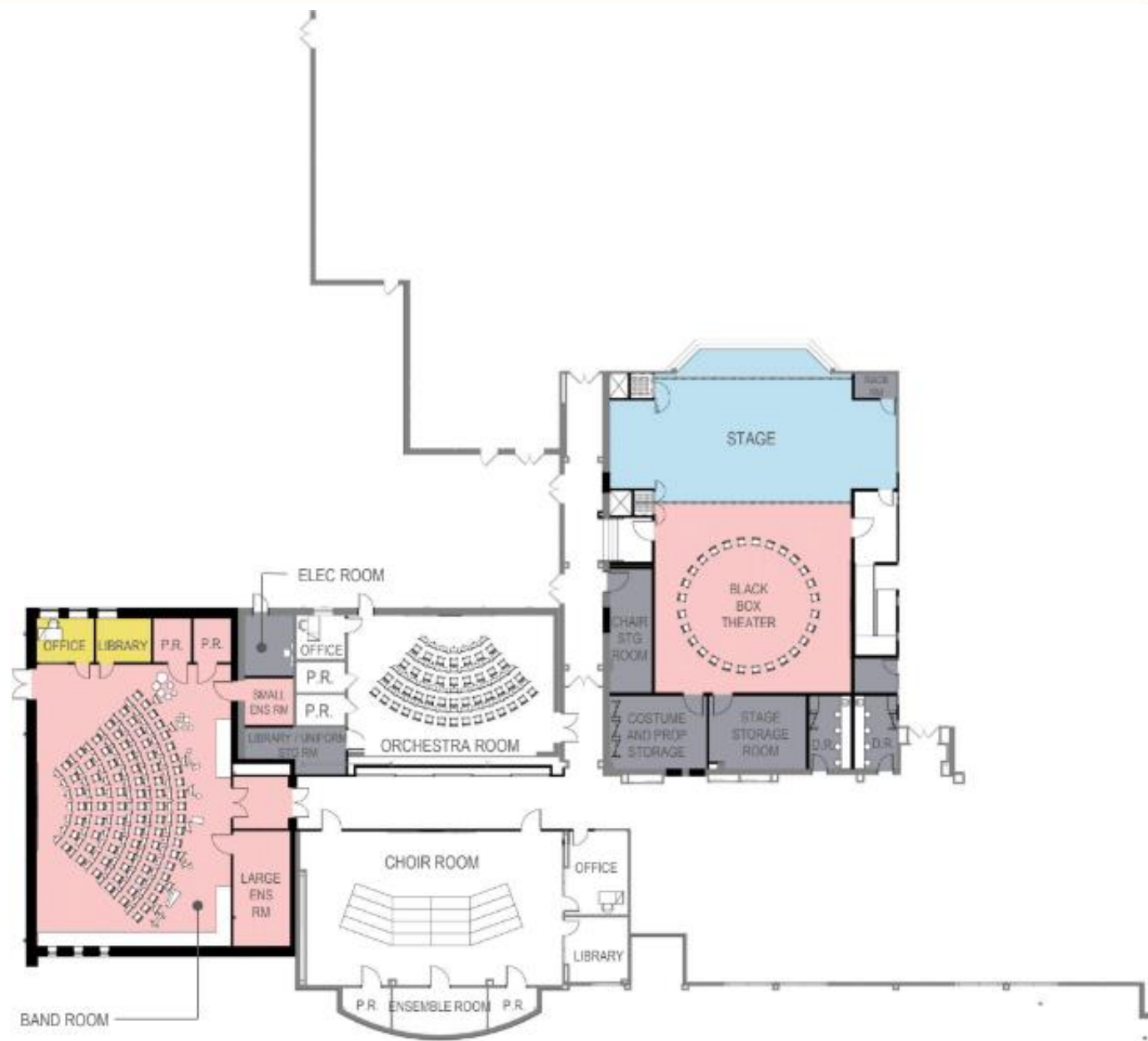
- Tidwell and Wilson

- Ensemble Room



LIGHT RENOVATION 600 SF  
 HEAVY RENOVATION 4,300 SF  
 NEW CONSTRUCTION 3,400 SF

CORE ACADEMIC SPACES  
 SHARED ACADEMIC SPACES  
 ADMINISTRATIVE SPACES  
 COMMUNITY SPACES  
 SERVICE SPACES



# Medlin Fine Arts Addition and Classroom Addition

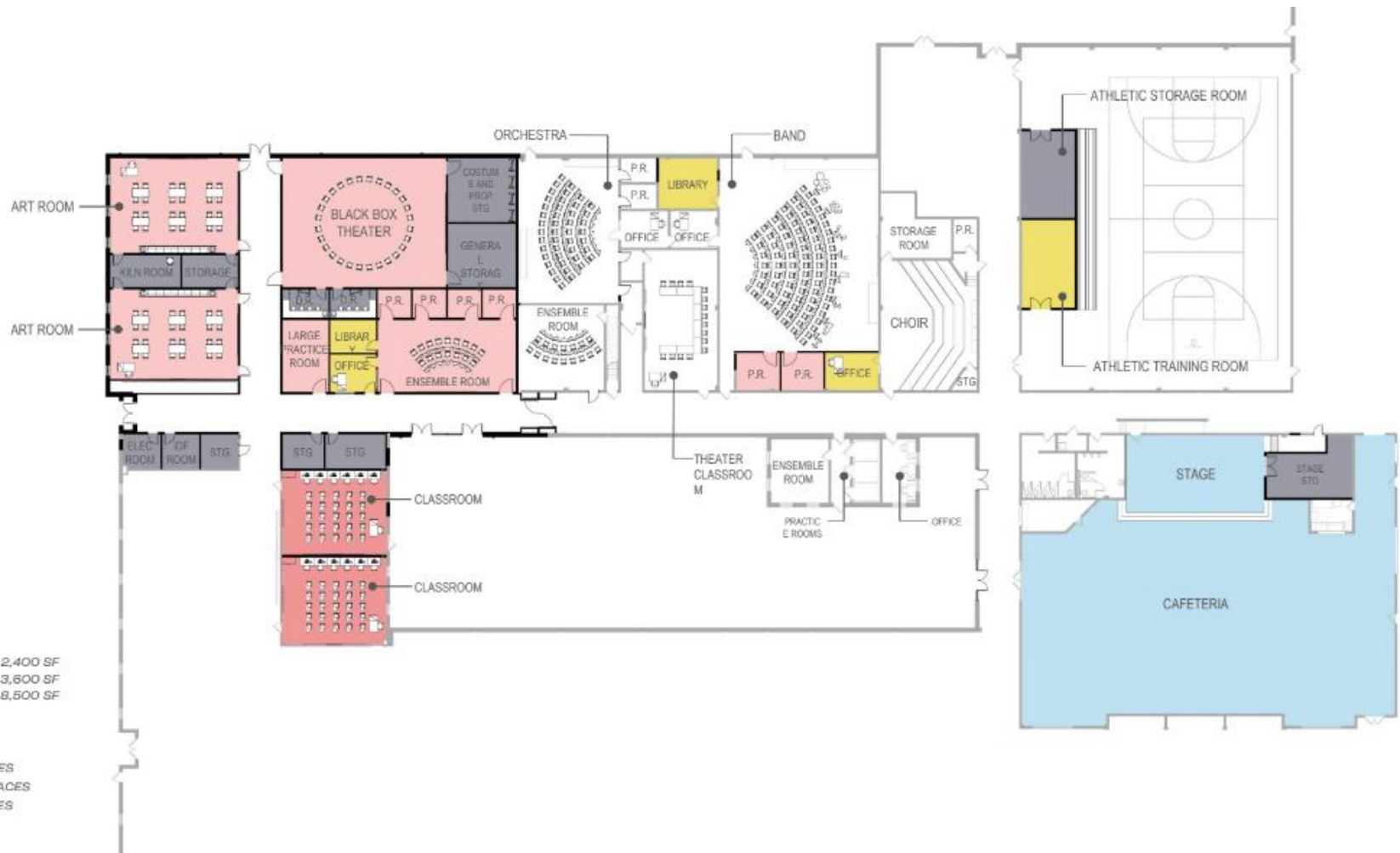


level 01 floor plan



level 02 floor plan

# Pike Fine Arts Addition





# Construction

- Byron Nelson Fieldhouse
- Byron Nelson Addition/Renovations
- Lance Thompson Elementary School
- Sendera Ranch/Thompson  
Addition/Renovations
- Safety and Security Upgrades

# Byron Nelson Fieldhouse



*Every Student Future Ready.*





4/5/19



*Every Student Future Ready.*



# Byron Nelson Classroom Addition



*Every Student Future Ready.*





*Every Student Future Ready.*





4/5/19



*Every Student Future Ready.*

Teamwork | Pride | Excellence  
**Northwest**  
INDEPENDENT SCHOOL DISTRICT  
[www.nisdtx.org](http://www.nisdtx.org)





















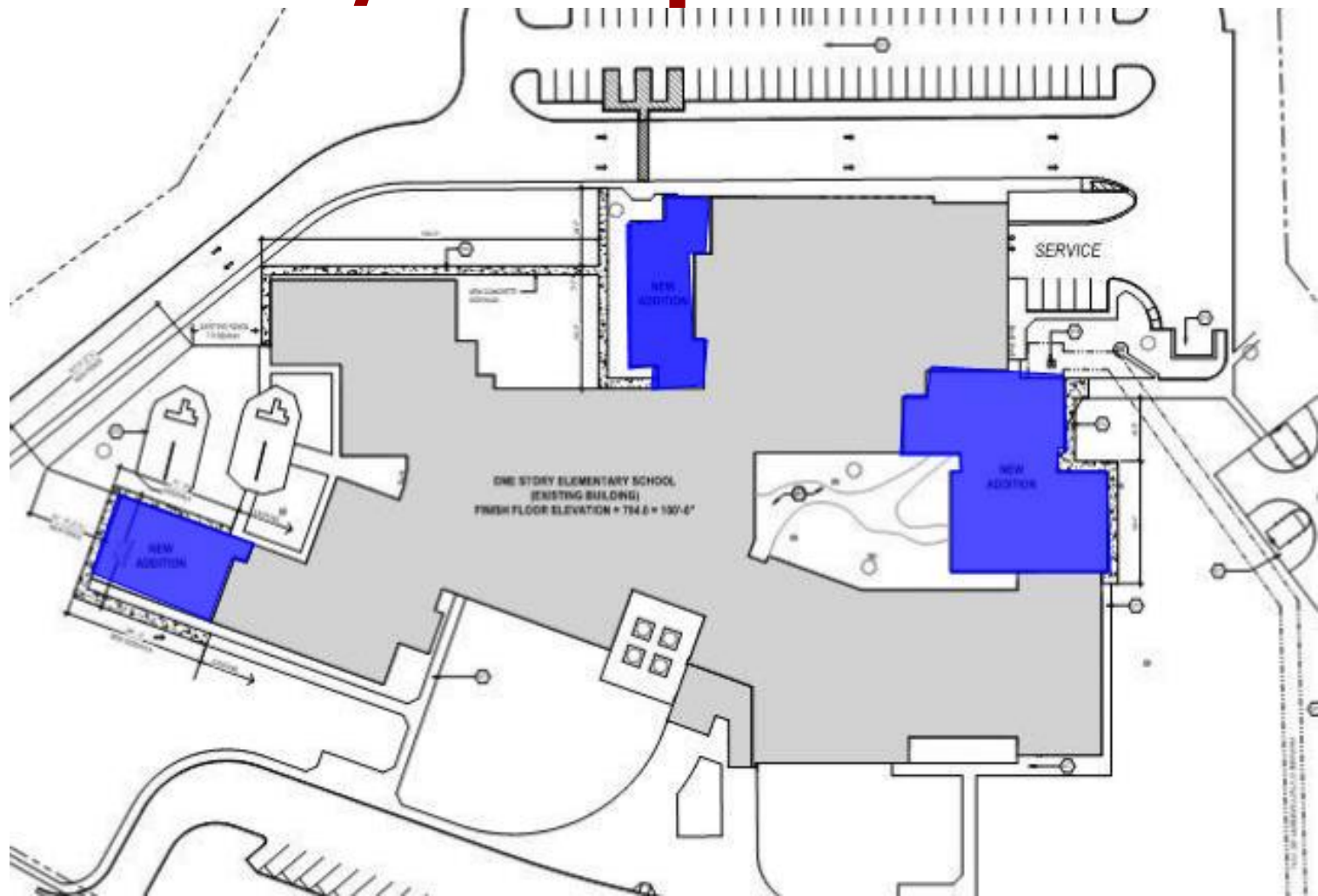








# Sendera/Thompson Addition











# Questions.