

*Northwest
Independent
School
District*



Quarterly
Report
1Q19

*Learn from Yesterday...
Understand Today...
Plan for Tomorrow*


TEMPLETON
DEMOGRAPHICS

hanleywood | metrostudy



Economic Conditions – DFW Area (March 2019)

3.1%

115,786 new jobs
National rate 1.0%



Job Growth

**Unemployment
Rate**



U.S. 3.9%
Texas 3.5%
DFW MSA 3.3%
Fort Worth 3.6%

-0.3%

34,523

1,007 more
starts than 1Q18



**Annual
Home Starts**



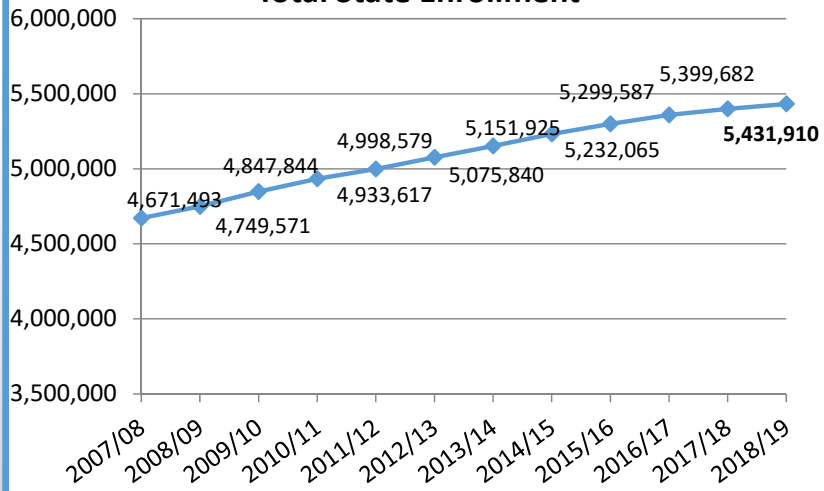


Texas Enrollment Trends

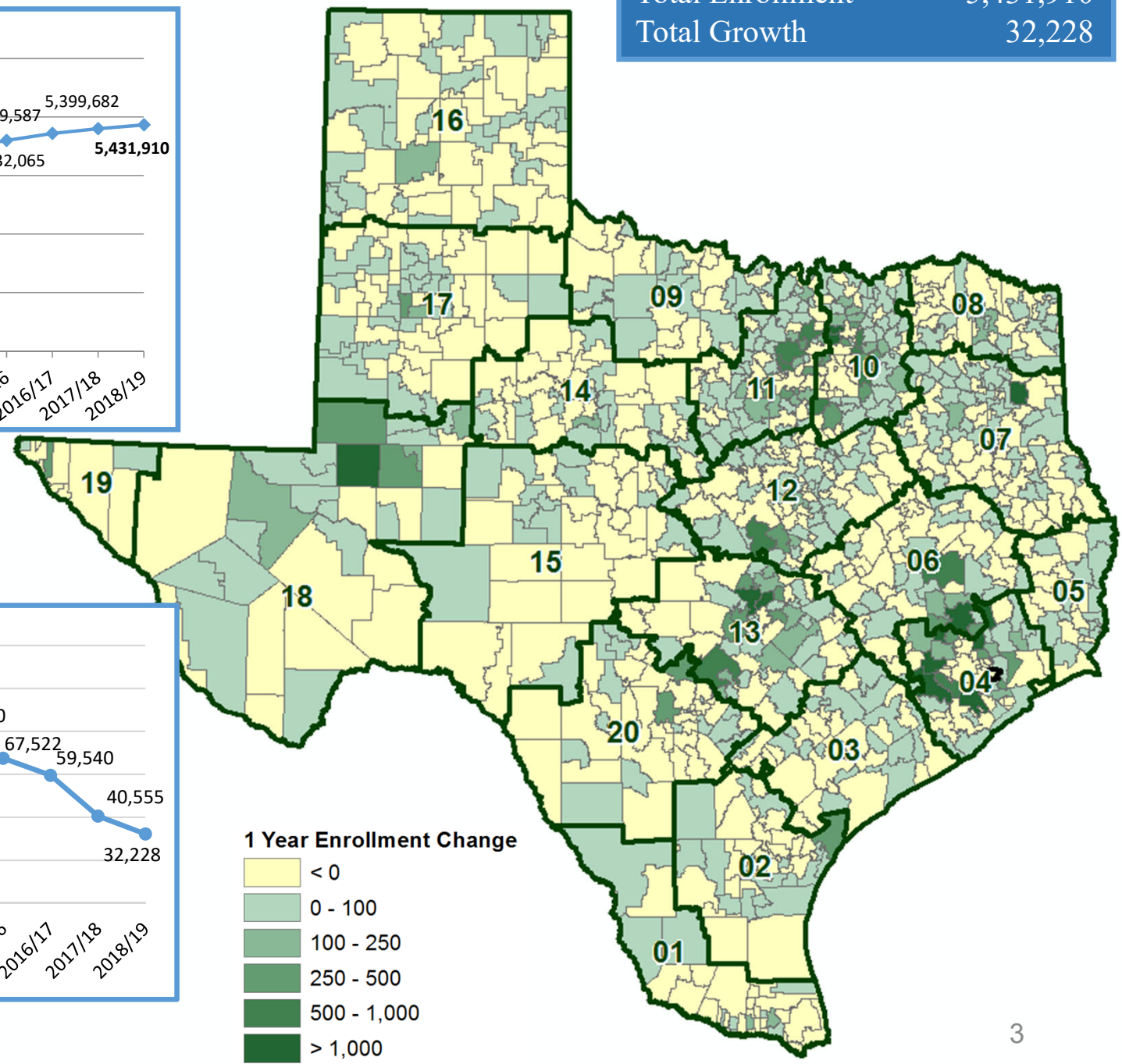
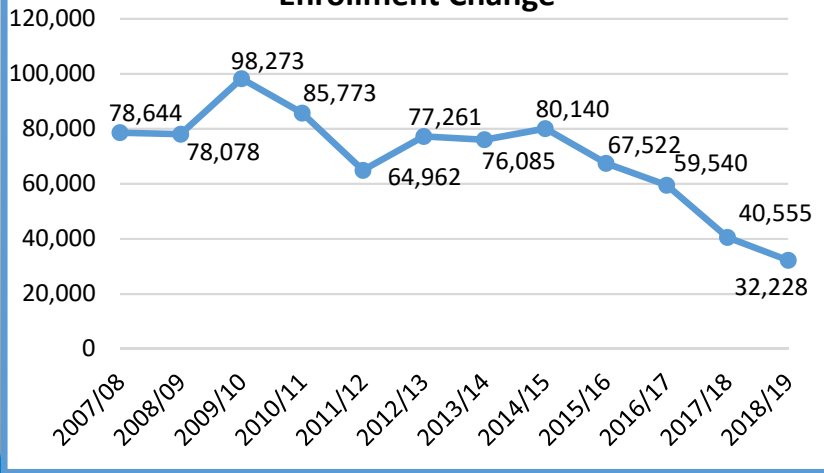
2018/19 State Enrollment

Total Enrollment 5,431,910
Total Growth 32,228

Total State Enrollment



Enrollment Change





ed 5,190
13/14 and
te of 27%

10

11

5 Yr Enrollment Change

- < 0
- 1 - 250
- 250 - 500
- 500 - 1,000
- 1,000 - 5,000
- > 5,000

4



Region 10 & 11 Enrollment Trends

Ranked by 5-year Change

Region 10

Rank	District	2013/14 Enrollment	2018/19 Enrollment	5-YEAR Change (13/14-18/19)	5-YEAR PCT Growth
1	Frisco ISD	46,053	60,182	14,129	30.7%
2	Prosper ISD	6,413	14,348	7,935	123.7%
3	Wylie ISD (Collin)	13,726	16,527	2,801	20.4%
4	Forney ISD	8,648	11,133	2,485	28.7%
5	Rockwall ISD	14,626	16,587	1,961	13.4%
6	Midlothian ISD	7,719	9,389	1,670	21.6%
7	Coppell ISD	11,364	12,925	1,561	13.7%
8	Grand Prairie ISD	27,740	29,200	1,460	5.3%
9	Melissa ISD	1,895	3,163	1,268	66.9%
10	Princeton ISD	3,623	4,887	1,264	34.9%
11	Crandall ISD	3,166	4,420	1,254	39.6%
12	Allen ISD	20,382	21,557	1,175	5.8%
13	Royse City ISD	5,015	6,169	1,154	23.0%
14	Waxahachie ISD	7,814	8,937	1,123	14.4%
15	Anna ISD	2,597	3,597	1,000	38.5%
16	Richardson ISD	38,283	39,108	825	2.2%
17	Community ISD	1,680	2,385	705	42.0%
18	Greenville ISD	4,804	5,492	688	14.3%
19	Celina ISD	2,075	2,722	647	31.2%
20	Lovejoy ISD	3,739	4,272	533	14.3%

Region 11

Rank	DISTRICT	2013/14 Enrollment	2018/19 Enrollment	5-YEAR CHANGE (13/14-18/19)	5-YEAR PCT Growth
1	Northwest ISD	18,950	24,141	5,191	27.4%
2	Denton ISD	26,312	30,169	3,857	14.7%
3	Mansfield ISD	32,779	35,293	2,514	7.7%
4	Eagle Mt-Saginaw ISD	18,197	20,054	1,857	10.2%
5	Burleson ISD	10,744	12,447	1,703	15.9%
6	Hurst-Euless-Bedford ISD	22,180	23,686	1,506	6.8%
7	Keller ISD	33,763	35,088	1,325	3.9%
8	Aledo ISD	4,874	6,129	1,255	25.7%
9	Little Elm ISD	6,637	7,769	1,132	17.1%
10	Argyle ISD	1,983	3,061	1,078	54.4%
11	Granbury ISD	6,658	7,346	688	10.3%
12	Everman ISD	5,515	6,174	659	11.9%
13	Crowley ISD	15,080	15,728	648	4.3%
14	Azle ISD	5,988	6,578	590	9.9%
15	Joshua ISD	5,004	5,585	581	11.6%
16	Carroll ISD	7,812	8,366	554	7.1%
17	Brock ISD	1,048	1,510	462	44.1%
18	Godley ISD	1,729	2,181	452	26.1%
19	Decatur ISD	2,982	3,413	431	14.5%
20	Grapevine-Colleyville ISD	13,523	13,941	418	3.1%





DFW New Home Ranking Report

ISD Ranked by Annual Closings – 1Q19

Rank	District Name	Annual Starts	Annual Closings	VDL	Future
1	Prosper ISD	2,753	2,667	4,655	21,922
2	Denton ISD	2,412	2,099	4,583	20,531
3	Frisco ISD	2,232	2,086	4,299	5,355
4	Northwest ISD*	1,851	1,841	2,978	31,543
5	Dallas ISD	1,730	1,503	2,089	5,672
6	Little Elm ISD	1,344	1,365	1,238	2,435
7	Eagle Mt.-Saginaw ISD	1,572	1,336	1,975	19,038
8	Forney ISD	1,116	1,237	2,122	15,030
9	Lewisville ISD	1,328	1,160	1,992	3,478
10	Crowley ISD	921	926	1,390	13,826
11	Rockwall ISD	763	879	1,981	9,804
12	Wylie ISD	779	850	865	3,670
13	Mansfield ISD	893	803	1,326	7,349
14	McKinney ISD	800	728	2,022	8,362
15	Midlothian ISD	611	685	1,277	19,439
16	Princeton ISD	756	671	646	8,276
17	Royse City ISD	782	650	1,236	10,173
18	Aledo ISD	561	646	1,315	14,722
19	Waxahachie ISD	649	630	949	20,653
20	Allen ISD	733	616	1,087	1,072

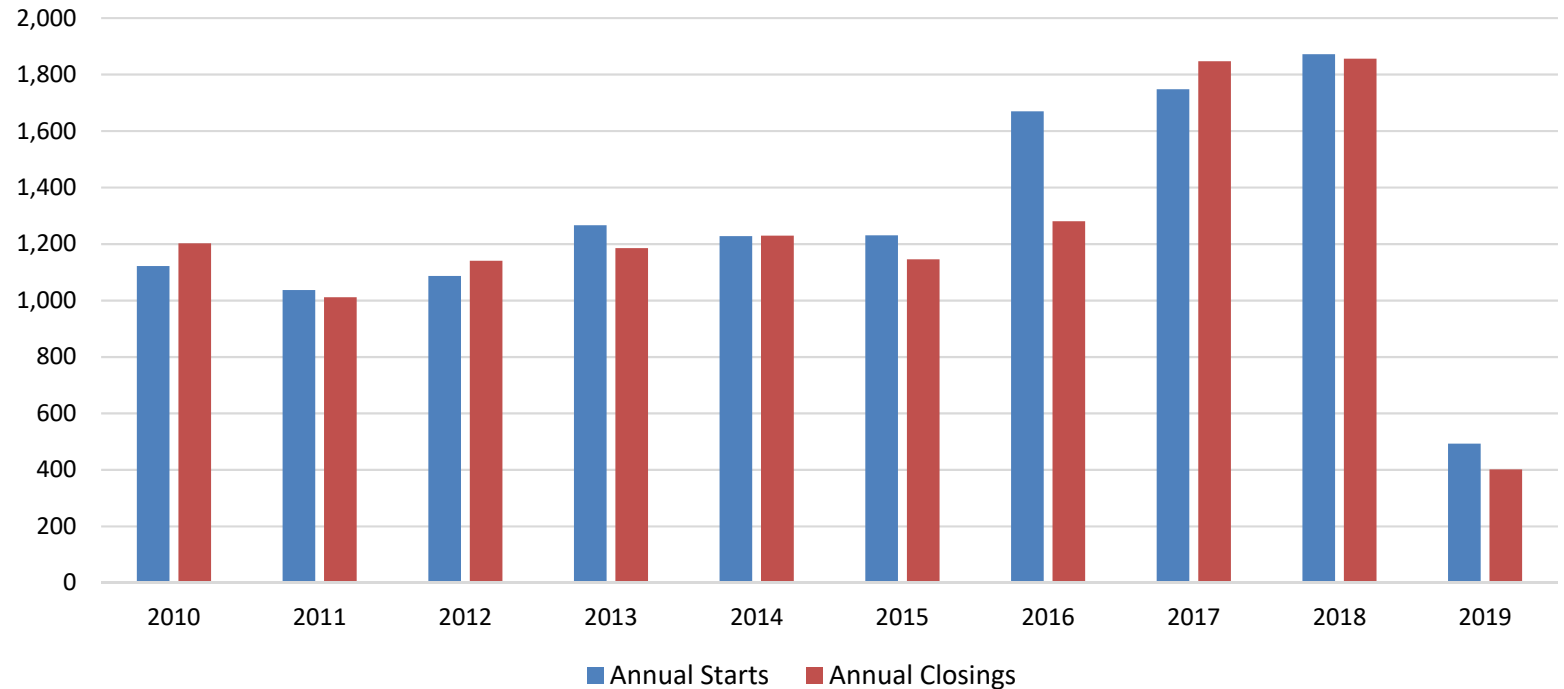
*Adjusted based on additional research by Templeton Demographics staff





New Housing Activity

Northwest ISD



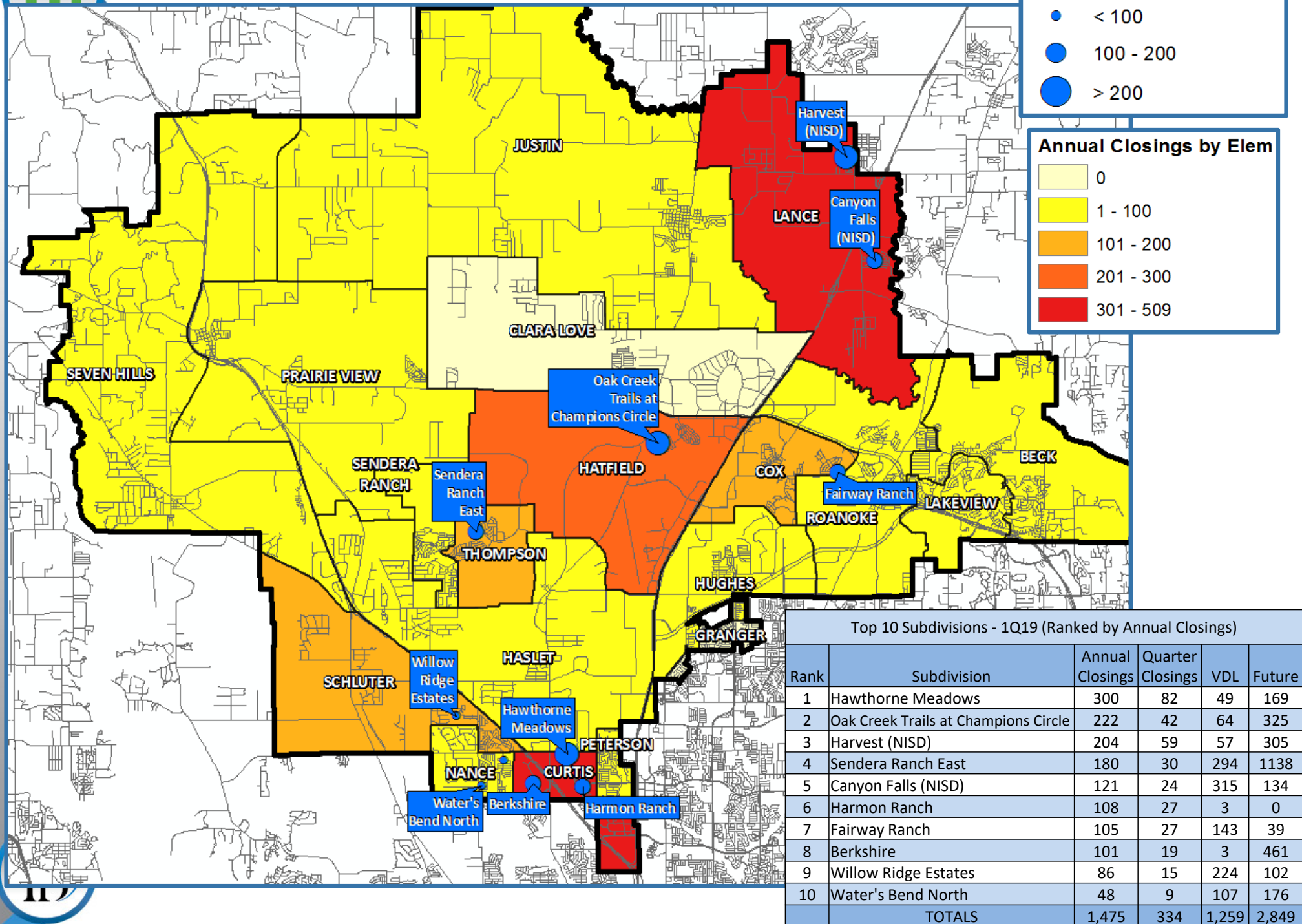
Starts	2013	2014	2015	2016	2017	2018	2019
1Q	288	357	230	309	449	493	493
2Q	362	282	310	321	445	471	
3Q	347	350	377	537	458	501	
4Q	270	239	314	503	396	407	
Total	1,267	1,228	1,231	1,670	1,748	1,872	493

Closings	2013	2014	2015	2016	2017	2018	2019
1Q	225	269	287	279	426	417	402
2Q	318	341	263	345	562	517	
3Q	299	347	283	320	473	549	
4Q	344	273	313	337	386	373	
Total	1,186	1,230	1,146	1,281	1,847	1,856	402

- NISD started more than 490 units in the first quarter for the second straight year
- The district had more than 400 1Q closings for the third straight year




Annual Closing Distribution





Housing Activity by Elementary Zone

Elementary Zone	Annual Starts	Quarter Starts	Annual Closings	Quarter Closings	Under Construction	Inventory	Vacant Dev. Lots	Future Lots
BECK	23	4	36	8	7	15	57	0
CLARA LOVE	0	0	0	0	0	0	0	4,400
COX	152	35	167	35	43	71	438	71
CURTIS	379	61	509	128	76	105	55	630
GRANGER	0	0	0	0	0	0	0	0
HASLET	64	27	25	5	40	53	382	4,527
HATFIELD	249	110	226	42	136	162	69	1,536
HUGHES	2	0	26	2	0	7	0	0
JUSTIN	119	32	68	18	55	86	336	1,731
LAKEVIEW	6	2	10	2	3	4	6	305
LANCE	338	60	349	84	94	163	518	4,591
NANCE	105	28	96	13	60	76	114	609
PETERSON	0	0	7	0	0	1	2	0
PRAIRIE VIEW	0	0	1	0	0	0	0	4,500
ROANOKE	6	0	3	0	6	6	39	4
SCHLUTER	207	64	127	35	76	123	633	2,599
SENDERA RANCH	1	0	4	0	0	4	15	3,587
SEVEN HILLS	1	0	7	0	0	0	20	1,315
THOMPSON	199	70	180	30	83	119	294	1,138
Grand Total	1,851	493	1,841	402	679	995	2,978	31,543

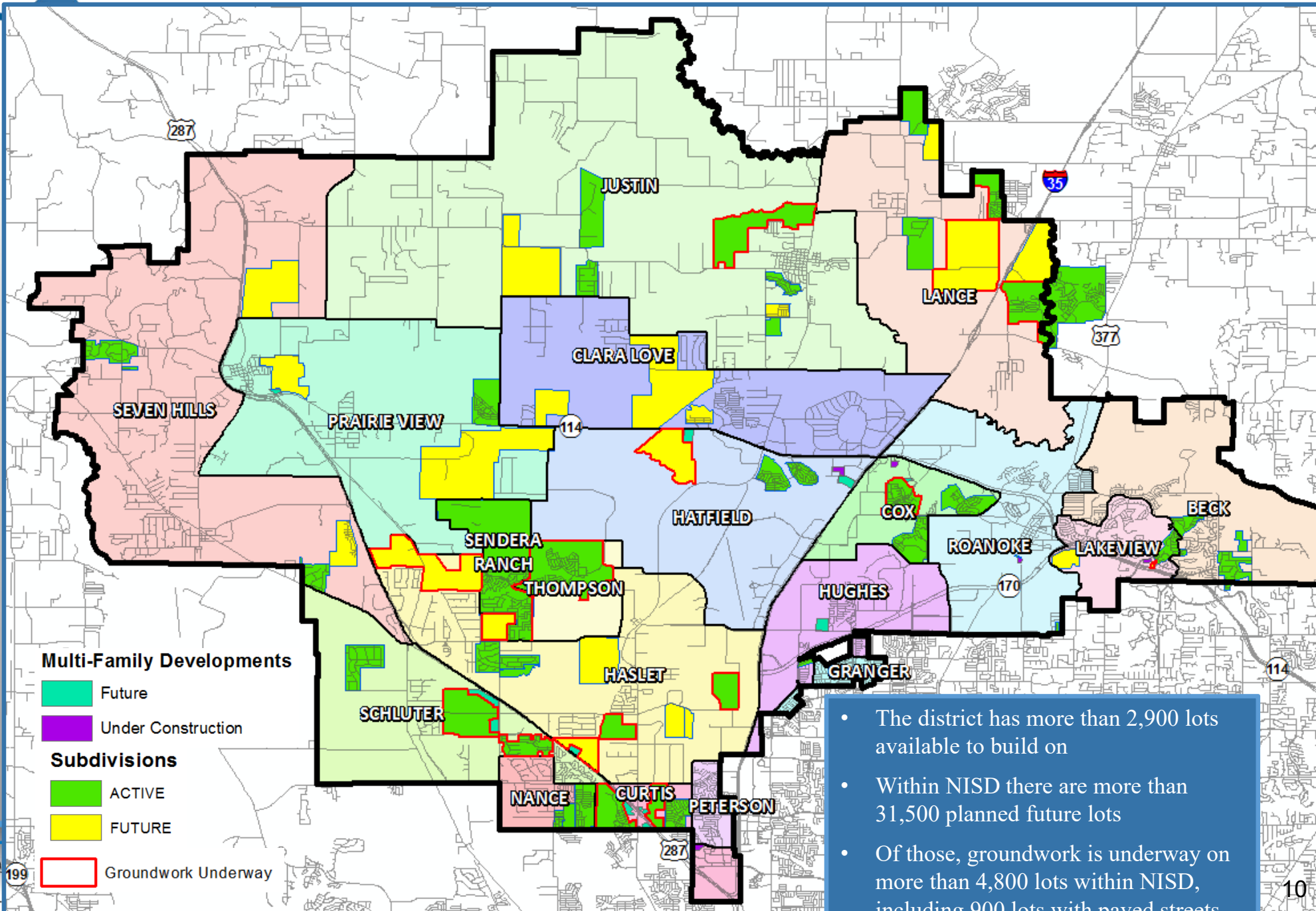
 Highest activity in the category

 Second highest activity in the category

 Third highest activity in the category



District Housing Overview



- The district has more than 2,900 lots available to build on
- Within NISD there are more than 31,500 planned future lots
- Of those, groundwork is underway on more than 4,800 lots within NISD, including 900 lots with paved streets



Residential Activity

Harvest

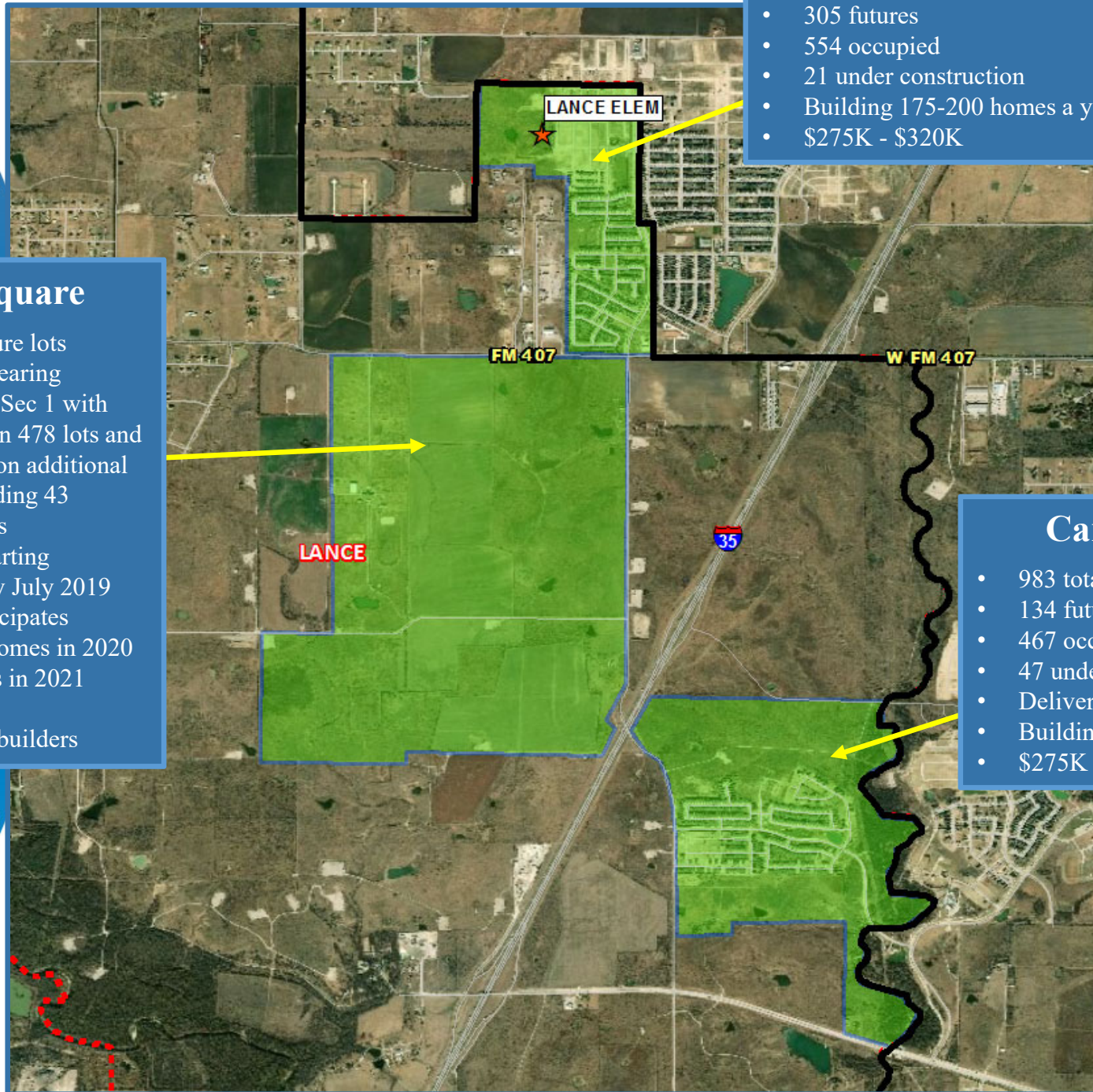
- 980 total lots within NISD
- 305 futures
- 554 occupied
- 21 under construction
- Building 175-200 homes a year
- \$275K - \$320K

Pecan Square

- 3,425 total future lots
- Groundwork nearing completion on Sec 1 with streets paved on 478 lots and streets paving on additional 197 lots, including 43 Townhome lots
- First homes starting construction by July 2019
- Developer anticipates building 200 homes in 2020 and 300 homes in 2021
- \$270K+
- 10 production builders

Canyon Falls

- 983 total lots within NISD
- 134 futures
- 467 occupied
- 47 under construction
- Delivered 249 lots in 1Q19
- Building 150 homes a year
- \$275K - \$530K





Residential Activity

Trails of Elizabeth Creek

- 1,211 total future lots
- Streets paving in Section 1 with 156 lots
- Groundwork underway on additional 740 lots
- Homes likely starting by fall 2019
- Future Avilla Reserve community on site
- 227 proposed single family homes for rent
- Rezoning request approved July 2018

ESTATE HIGHWAY 114

PRAIRIE VIEW

CLARA LOVE

CLARA LOVE
ELEM

HATFIELD ELEM

PIKE MID

NORTHWEST
HIGH

FM 156

HATFIELD

Alpha Ranch

- 3,000 total planned future lots
- Phase 1: Elizabeth Creek at Alpha Ranch with 377 lots preliminary plat approved in 2017
- Anticipate homes starting by 2021/22

Oak Creek Trails at Champions Circle

- 1,033 total lots
- 325 futures
- 483 occupied
- Started 110 homes in 1Q19
- Building 250- 300 homes in 2019
- \$250K - \$375K





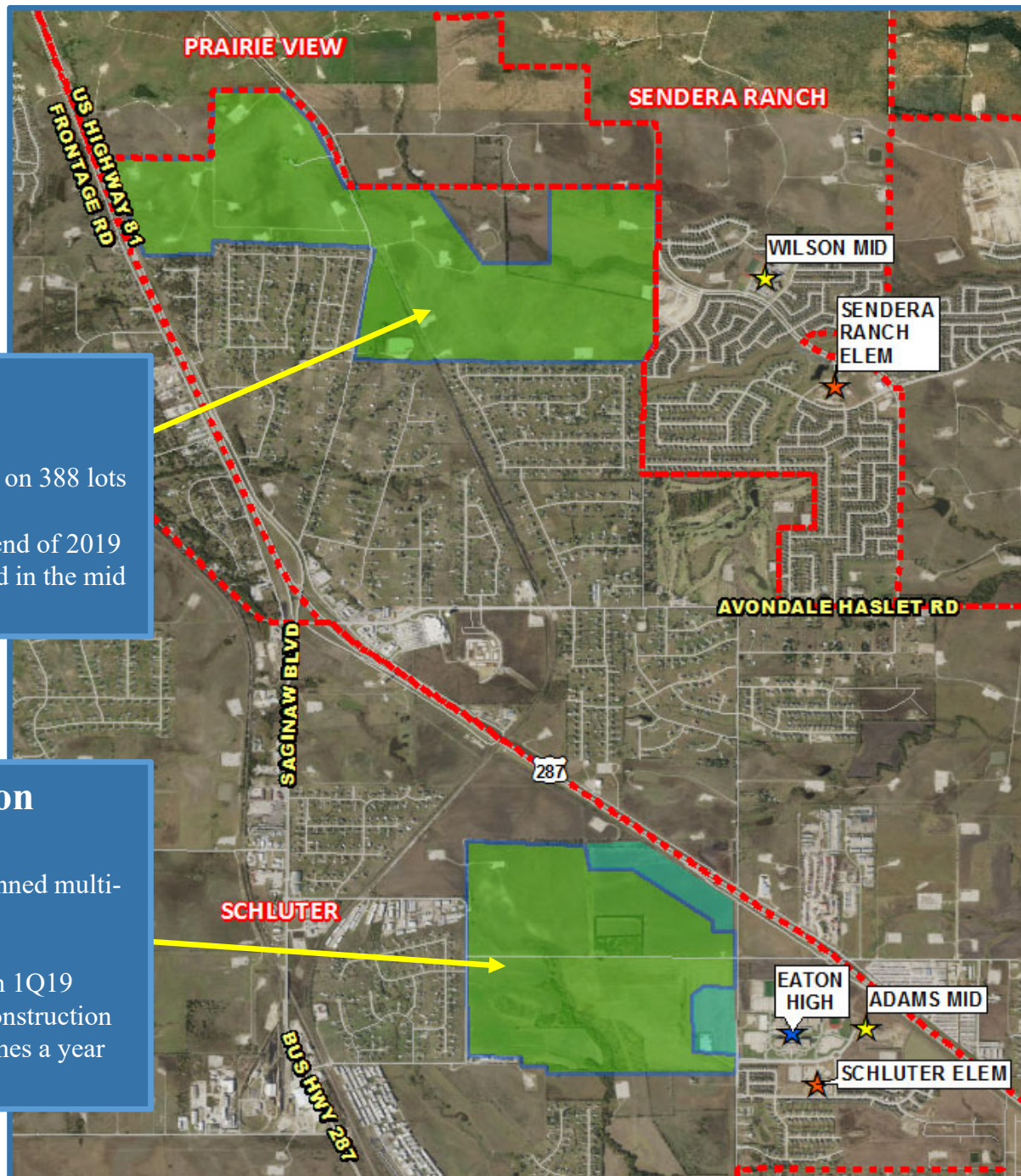
Residential Activity

Northstar

- 2,124 total future lots
- Groundwork underway on 388 lots in Section 1
- Homes starting by the end of 2019
- Home prices anticipated in the mid to low \$200s to \$450K

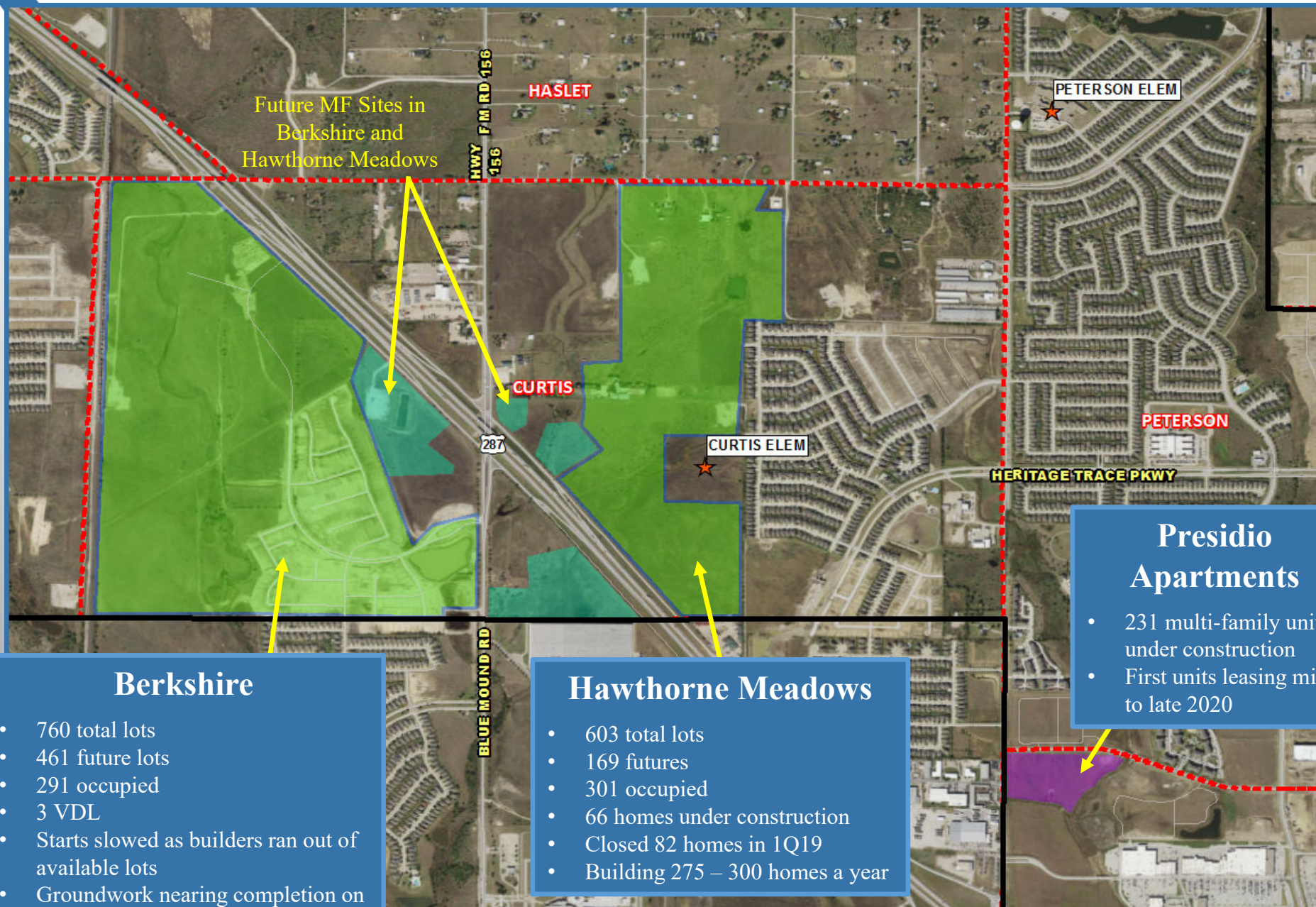
Wellington

- 1,679 total lots
- Approx. 1,400 planned multi-family units
- 404 VDL
- 20 homes closed in 1Q19
- 49 homes under construction
- Building ~200 homes a year
- \$300K - \$425K





Residential Activity



Berkshire

- 760 total lots
- 461 future lots
- 291 occupied
- 3 VDL
- Starts slowed as builders ran out of available lots
- Groundwork nearing completion on 236 lots in Section 2
- Anticipate starts to rebound in 2019

Hawthorne Meadows

- 603 total lots
- 169 futures
- 301 occupied
- 66 homes under construction
- Closed 82 homes in 1Q19
- Building 275 – 300 homes a year

Presidio Apartments

- 231 multi-family units under construction
- First units leasing mid to late 2020



TEA Transfer Report

Transfers In From	2013/14	2014/15	2015/16	2016/17	2017/18	2018/19	5 Year Change
Argyle ISD	9	12	14	20	14	17	8
Birdville ISD	12	11	16	18	16	14	2
Boyd ISD	3	6	3	3	16	12	9
Decatur ISD	20	25	26	26	40	44	24
Denton ISD	8	10	16	22	18	26	18
Eagle Mt-Saginaw ISD	54	70	84	105	107	117	63
Keller ISD	176	193	185	160	146	124	-52
Lewisville ISD	9	7	12	9	3	12	3
Ponder ISD	17	13	10	10	3	11	-6
Springtown ISD	3	3	5	5	3	10	7
Total Transfers In*	487	432	481	494	471	467	-20

Transfers Out To	2013/14	2014/15	2015/16	2016/17	2017/18	2018/19	5 Year Change
Argyle ISD	13	10	27	22	27	34	21
Birdville ISD	19	26	27	24	19	22	3
Boyd ISD	89	96	96	85	74	79	-10
Carroll ISD	134	146	153	158	174	177	43
Decatur ISD	29	29	32	36	28	35	6
Eagle Mt-Saginaw ISD	76	64	56	64	43	51	-25
Grapevine-Colleyville ISD	13	26	20	27	34	38	25
Hallsville ISD	0	0	0	0	0	22	22
International Leadership of Texas	0	254	261	306	469	465	465
Keller ISD	43	45	66	125	187	190	147
Lewisville ISD	8	8	5	12	15	18	10
Ponder ISD	25	27	25	31	27	27	2
Texas College Preparatory Academie	59	44	21	28	29	32	-27
Westlake Academy Charter School	84	95	114	123	129	143	59
Total Transfers Out*	707	951	984	1,133	1,360	1,440	733

*Totals include additional districts per TEA rounding rules





Ten Year Forecast

By Grade Level

Year (Oct.)	EE/PK	K	1st	2nd	3rd	4th	5th	6th	7th	8th	9th	10th	11th	12th	Total	Growth	% Growth
2014/15	311	1,550	1,538	1,618	1,596	1,553	1,557	1,550	1,521	1,541	1,595	1,481	1,275	1,145	19,831		
2015/16	333	1,541	1,662	1,674	1,650	1,674	1,664	1,626	1,595	1,577	1,765	1,622	1,398	1,195	20,976	1,145	5.8%
2016/17	360	1,622	1,621	1,736	1,714	1,783	1,727	1,747	1,725	1,658	1,727	1,778	1,546	1,300	22,044	1,068	5.1%
2017/18	445	1,753	1,709	1,705	1,822	1,814	1,882	1,813	1,782	1,784	1,802	1,763	1,665	1,402	23,141	1,097	5.0%
2018/19	503	1,792	1,814	1,808	1,803	1,861	1,911	1,942	1,883	1,822	1,952	1,829	1,617	1,579	24,116	975	4.2%
2019/20	515	1,925	1,905	1,922	1,912	1,897	1,967	1,991	2,007	1,945	2,040	1,993	1,697	1,547	25,263	1,147	4.8%
2020/21	515	2,037	2,070	2,018	2,034	2,013	2,030	2,067	2,076	2,072	2,165	2,069	1,867	1,642	26,675	1,412	5.6%
2021/22	515	2,118	2,192	2,195	2,137	2,146	2,152	2,132	2,163	2,151	2,307	2,197	1,955	1,815	28,175	1,500	5.6%
2022/23	515	2,214	2,280	2,328	2,312	2,265	2,269	2,256	2,224	2,238	2,373	2,302	2,062	1,879	29,517	1,342	4.8%
2023/24	515	2,310	2,382	2,411	2,445	2,433	2,380	2,373	2,359	2,312	2,464	2,353	2,177	1,995	30,909	1,392	4.7%
2024/25	515	2,421	2,462	2,500	2,504	2,552	2,548	2,482	2,466	2,439	2,522	2,459	2,228	2,102	32,200	1,291	4.2%
2025/26	515	2,525	2,584	2,581	2,606	2,632	2,679	2,692	2,577	2,566	2,663	2,528	2,337	2,178	33,663	1,463	4.5%
2026/27	515	2,604	2,693	2,713	2,698	2,728	2,751	2,796	2,799	2,670	2,791	2,671	2,429	2,277	35,135	1,472	4.4%
2027/28	515	2,688	2,775	2,828	2,826	2,811	2,843	2,861	2,893	2,896	2,895	2,787	2,563	2,365	36,546	1,411	4.0%
2028/29	515	2,772	2,858	2,905	2,948	2,948	2,950	2,977	2,972	3,003	3,102	2,897	2,636	2,470	37,953	1,407	3.8%

Yellow box = largest grade per year

Green box = second largest grade per year

- Northwest ISD is expected to enroll more than 25,000 students next fall, and more than 30,000 by 2023
- 5 year student growth = 6,793
- 2023/24 enrollment = 30,909 students
- 10 year student growth = 13,837
- 2028/29 enrollment = 37,953 students



Ten Year Forecast

By Elementary Campus

		HISTORY	Fall	ENROLLMENT PROJECTIONS									
Campus	Capacity	2017/18	2018/19	2019/20	2020/21	2021/22	2022/23	2023/24	2024/25	2025/26	2026/27	2027/28	2028/29
Beck Elementary	850	838	822	786	792	796	806	807	840	855	872	881	883
Clara Love Elementary	850	614	743	718	717	744	800	873	953	1,019	1,095	1,163	1,232
Cox Elementary	850	620	677	749	813	881	933	963	974	983	985	994	1,018
Curtis Elementary	850	0	503	651	783	911	987	1,033	1,049	1,063	1,061	1,051	1,045
Granger Elementary	850	928	793	769	766	766	775	768	788	809	814	811	812
Haslet Elementary	650	708	469	490	530	599	701	797	884	986	1,087	1,197	1,278
Hatfield Elementary	450	505	380	374	421	481	540	601	663	716	749	783	824
Hughes Elementary	850	632	691	716	751	772	809	835	853	854	847	848	853
Justin Elementary	650	572	633	539	572	598	633	666	682	694	708	728	750
Lakeview Elementary	650	623	591	605	599	603	610	618	633	650	683	704	730
Lance Elementary	850	0	0	322	421	527	603	686	741	790	845	910	965
Nance Elementary	650	572	616	646	675	724	756	800	823	828	833	836	833
Peterson Elementary	850	769	741	787	799	824	846	853	870	862	863	842	834
Prairie View Elementary	650	447	447	478	475	501	525	570	625	706	794	894	992
Roanoke Elementary	850	754	763	657	665	673	657	663	667	671	680	689	703
Sendera Ranch Elementary*	650	565	655	644	648	648	664	694	719	759	824	916	1,002
Seven Hills Elementary	650	572	564	562	578	568	578	581	586	604	616	635	660
Schluter Elementary	850	720	798	866	949	989	1,045	1,093	1,143	1,224	1,277	1,327	1,391
Thompson Elementary*	650	691	606	684	763	850	915	975	1,009	1,049	1,069	1,077	1,091
ELEMENTARY SCHOOL TOTALS	14,150	11,130	11,492	12,043	12,717	13,455	14,183	14,876	15,502	16,122	16,702	17,286	17,896
Elementary Absolute Growth		567	362	551	674	738	728	693	626	620	580	584	610
Elementary Percent Growth		5.37%	3.25%	4.79%	5.60%	5.80%	5.41%	4.89%	4.21%	4.00%	3.60%	3.50%	3.53%

*Additional capacity opening in 2019/20

Green box = within 5% of capacity

Yellow box = over 105% of capacity

Ten Year Forecast

By Secondary Campus

		HISTORY	Fall	ENROLLMENT PROJECTIONS									
Campus	Capacity	2017/18	2018/19	2019/20	2020/21	2021/22	2022/23	2023/24	2024/25	2025/26	2026/27	2027/28	2028/29
Adams Middle School	1,200	0	1,177	1,302	1,408	1,537	1,692	1,785	1,876	1,985	2,084	2,148	2,187
Chisholm Trail Middle School	1,100	1,067	472	476	519	523	557	591	642	707	778	860	942
Gene Pike Middle School	1,100	933	982	1,040	1,087	1,120	1,163	1,210	1,301	1,402	1,538	1,609	1,682
Medlin Middle School	1,100	1,117	1,121	1,150	1,157	1,114	1,091	1,100	1,077	1,058	1,048	1,092	1,116
Tidwell Middle School	1,200	1,212	965	1,020	1,035	1,089	1,107	1,179	1,213	1,286	1,323	1,387	1,385
Wilson Middle School	1,200	1,050	930	955	1,009	1,063	1,108	1,179	1,278	1,397	1,494	1,554	1,640
MIDDLE SCHOOL TOTALS	6,900	5,379	5,647	5,943	6,215	6,446	6,718	7,044	7,387	7,835	8,265	8,650	8,952
Middle School Absolute Growth		249	268	296	272	231	272	326	343	448	430	385	302
Middle School Percent Growth		4.85%	4.98%	5.24%	4.58%	3.72%	4.22%	4.85%	4.87%	6.06%	5.49%	4.66%	3.49%
Northwest High School	2,525	1,756	1,817	1,906	1,977	2,073	2,135	2,234	2,306	2,428	2,551	2,665	2,802
Byron Nelson High School	2,400	2,508	2,502	2,520	2,685	2,804	2,943	3,037	3,079	3,128	3,216	3,253	3,331
Eaton High School	2,500	2,190	2,437	2,629	2,859	3,175	3,316	3,496	3,704	3,928	4,179	4,470	4,750
Steele Accelerated High School	450	144	190	190	190	190	190	190	190	190	190	190	190
Denton County JJAEP		1	1	1	1	1	1	1	1	1	1	1	1
Denton Creek		33	30	31	31	31	31	31	31	31	31	31	31
HIGH SCHOOL TOTALS	7,875	6,632	6,977	7,277	7,743	8,274	8,616	8,989	9,311	9,706	10,168	10,610	11,105
High School Absolute Growth		281	345	300	466	531	342	373	322	395	462	442	495
High School Percent Growth		4.42%	5.20%	4.30%	6.40%	6.86%	4.13%	4.33%	3.58%	4.24%	4.76%	4.35%	4.67%
DISTRICT TOTALS	28,925	23,141	24,116	25,263	26,675	28,175	29,517	30,909	32,200	33,663	35,135	36,546	37,953
District Absolute Growth		1,097	975	1,147	1,412	1,500	1,342	1,392	1,291	1,463	1,472	1,411	1,407
District Percent Growth		5.0%	4.2%	4.8%	5.6%	5.6%	4.8%	4.7%	4.2%	4.5%	4.4%	4.0%	3.8%

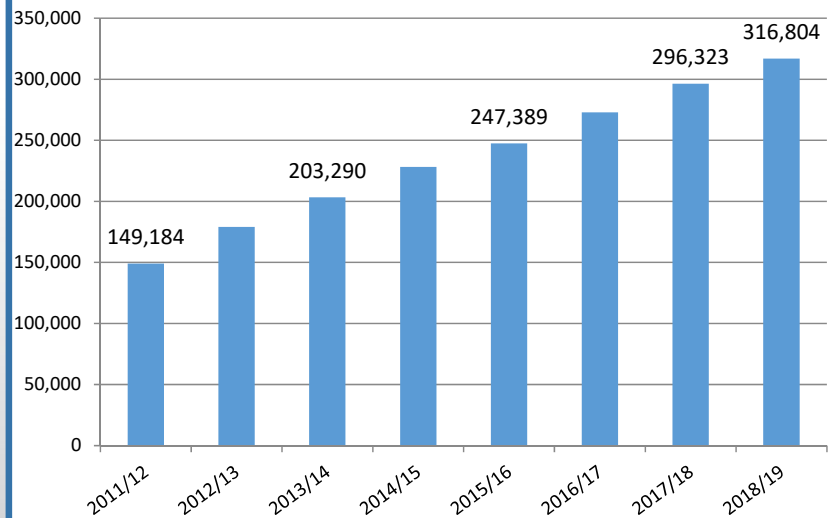
Green box = within 5% of capacity
Yellow box = over 105% of capacity



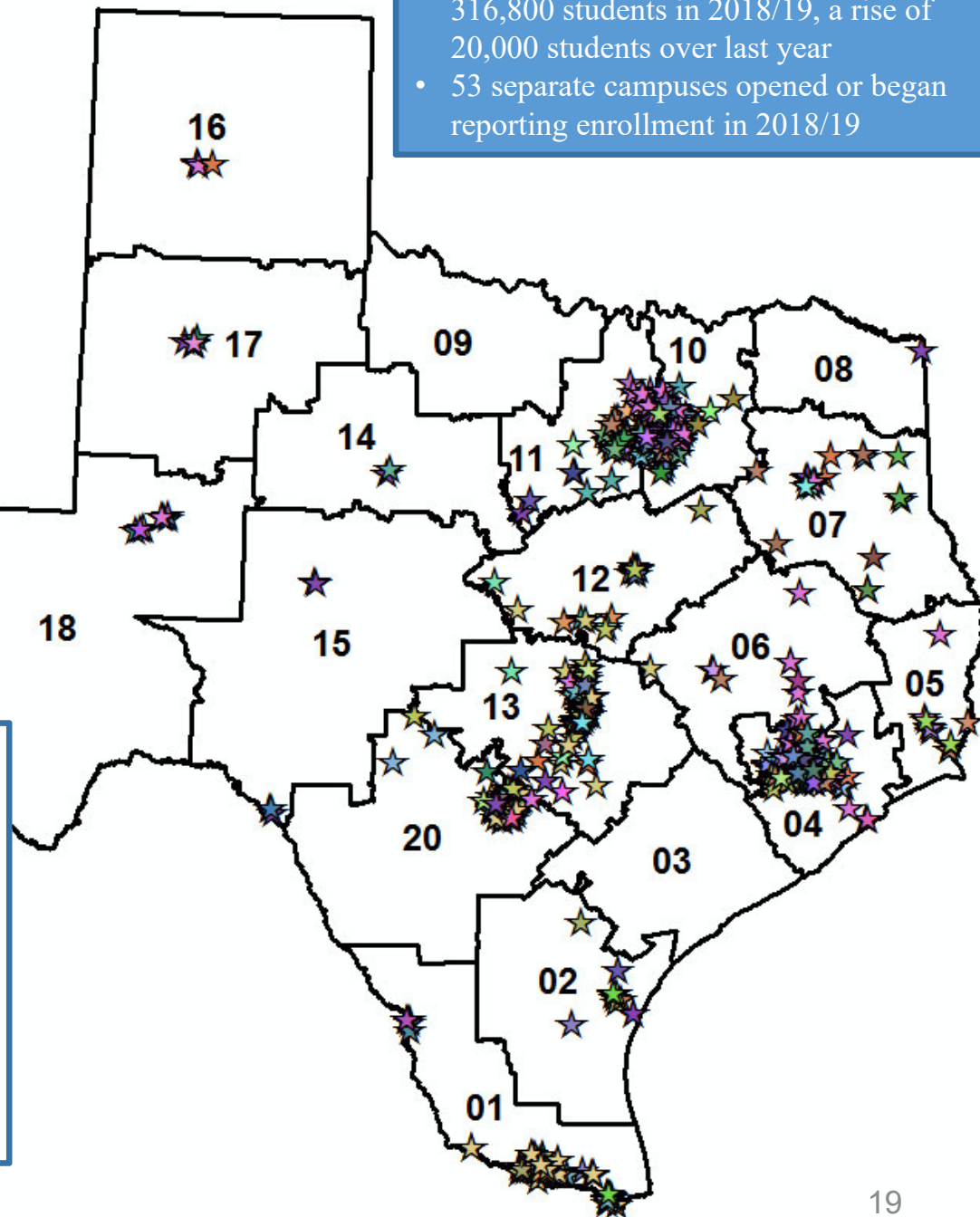
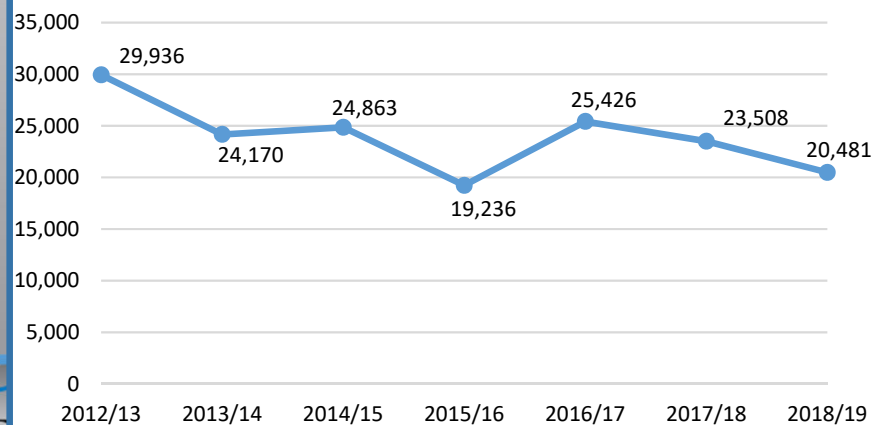
Charter Schools in Texas

- There are currently more than 750 charter school campuses open across Texas
- These campuses enrolled more than 316,800 students in 2018/19, a rise of 20,000 students over last year
- 53 separate campuses opened or began reporting enrollment in 2018/19

Total Charter Enrollment

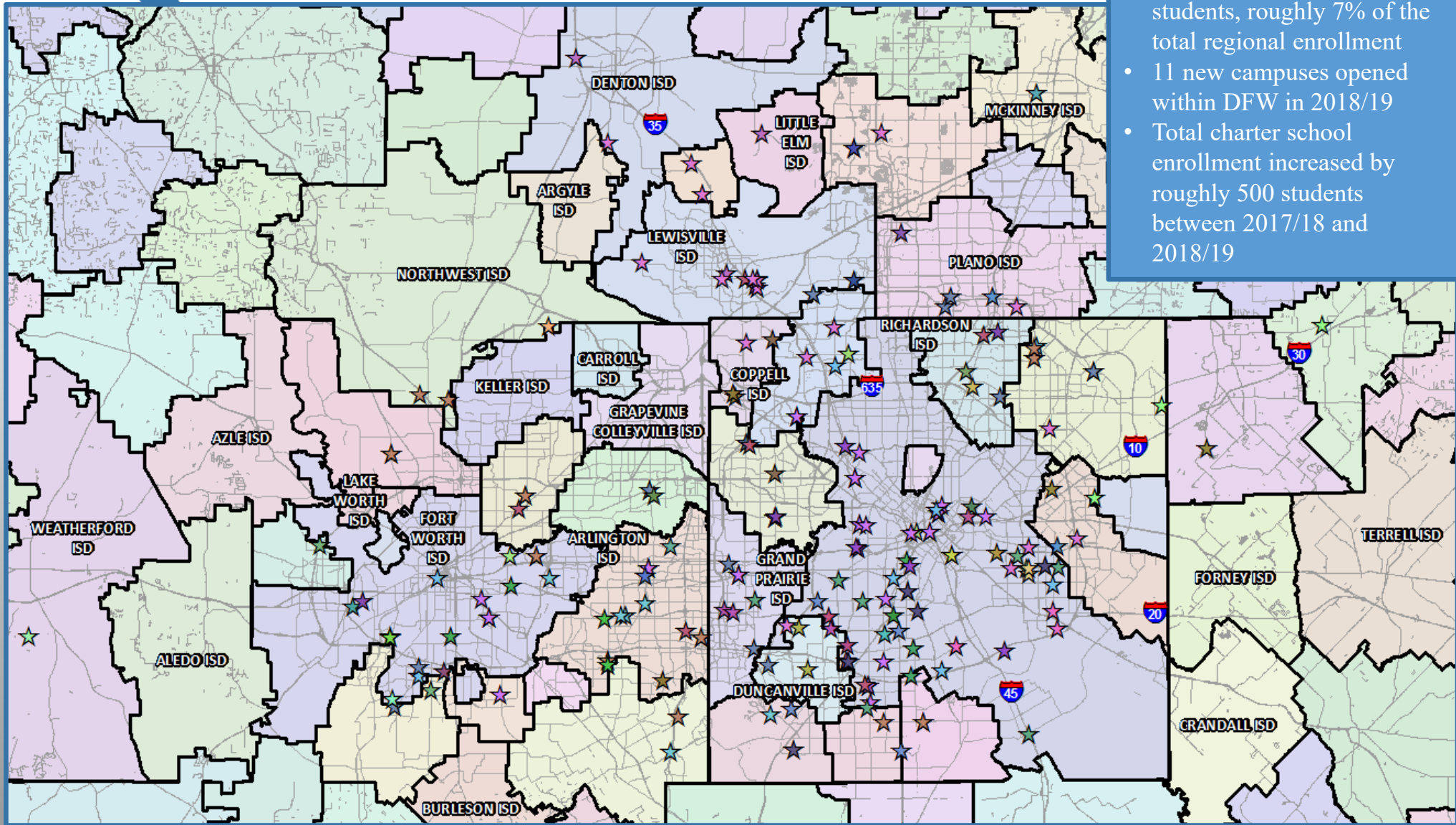


Charter Enrollment Change



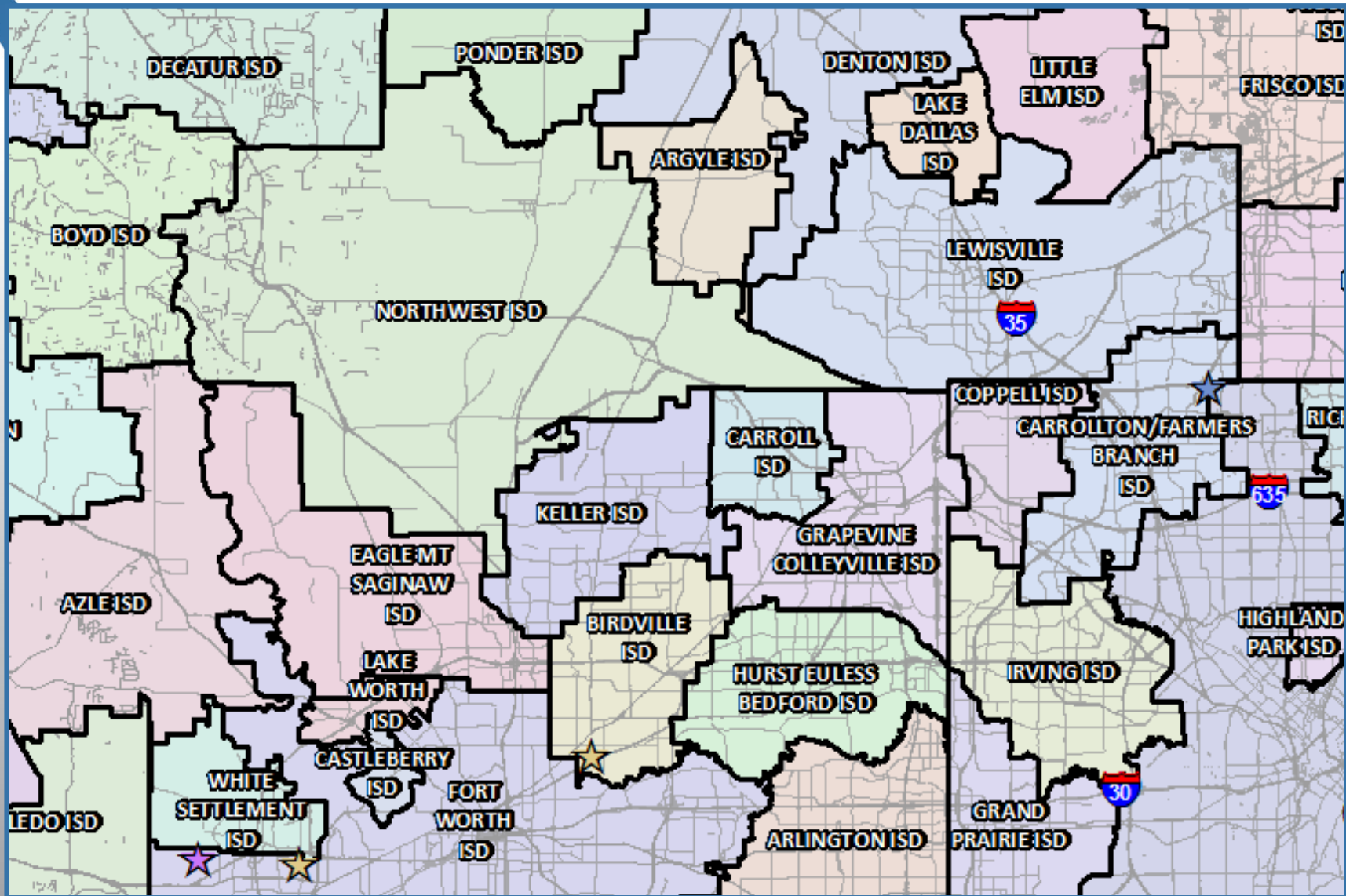
Charter Campuses in DFW

- There are approx. 220 charter campuses operating within Regions 10 and 11
- In 2018/19 these campuses enrolled more than 105,400 students, roughly 7% of the total regional enrollment
- 11 new campuses opened within DFW in 2018/19
- Total charter school enrollment increased by roughly 500 students between 2017/18 and 2018/19





New Campuses Opening in DFW in 2019/20



Charter School	Location	Grades	Notes
Uplift Elevate Prep	10900 Chapin Rd, FW	KG – 2, 6,7	Capacity for 1,900 students once KG -12
IDEA Rise Academy	3000 S Cherry Lane, FW	KG – 2, 6	Anticipate 460 to 520 students at opening
IDEA Achieve	1900 Thomas Rd, Haltom City	KG – 2, 6	Anticipate 460 to 520 students at opening
Life School Carrollton	2660 E Trinity Mills Rd, Carrollton	KG-5th	Could enroll 400-500 students at opening





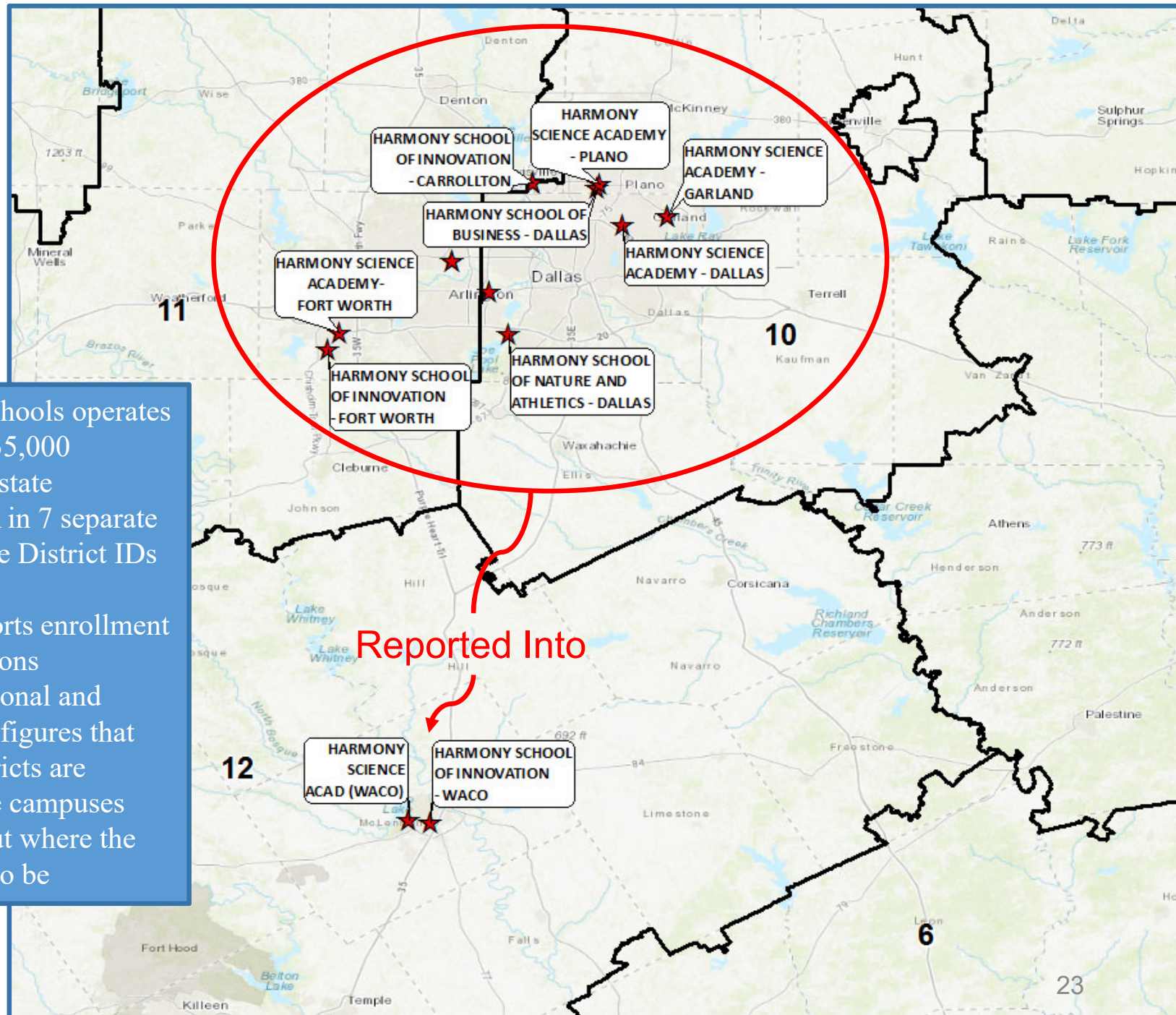
Challenges to Tracking Charter Schools

- Physical school locations vs TEA reporting locations
- Flexibility with facilities- temporary buildings, shorter construction time, different city approval process
- New Charters awarded annually
- Charter < > Campus
- Existing Charter holder expansions or relocations
- Public information requests- what information can be obtained
- Disclosure forms to impacted ISDs
 - Do not have to disclose a specific site address
 - “impacted districts” frequently include all districts within the charter’s approved “district boundary”. This is frequently 20 -30 public school districts or zip codes



Case Study: Charter School Enrollment Reporting

- Harmony Public Schools operates 37 campuses with 35,000 students across the state
- They report to TEA in 7 separate districts with unique District IDs and campuses
- Each “district” reports enrollment out of multiple regions
- This results in Regional and District enrollment figures that are skewed, as districts are reporting not where campuses and students are, but where the district is reported to be





Texas Charter School- As Reported to TEA

REGION	Total Charter Enrollment			Current	1-YEAR		5-YEAR		% of Total Enrollment	
	2015/16	2016/17	2017/18	2018/19	CHANGE	PERCENT	CHANGE	PERCENT	Total Enrollment	PERCENT
1	28,180	34,592	41,050	49,181	8,131	19.8%	28,007	132.3%	436,115	11.3%
2	1,255	1,252	1,261	1,262	1	0.1%	-210	-14.3%	103,152	1.2%
3	0	0	0	0	0	0.0%	0	0.0%	53,344	0.0%
4	56,011	56,940	58,306	46,270	-12,036	-20.6%	-4,143	-8.2%	1,201,680	3.9%
5	1,374	1,731	1,780	2,345	565	31.7%	1,420	153.5%	84,066	2.8%
6	1,446	1,474	1,762	1,927	165	9.4%	27	1.4%	201,228	1.0%
7	3,348	3,755	4,141	4,329	188	4.5%	1,487	52.3%	173,796	2.5%
8	0	0	0	0	0	0.0%	0	0.0%	56,113	0.0%
9	0	0	0	0	0	0.0%	-159	-100.0%	37,533	0.0%
10	60,720	70,142	79,139	81,298	2,159	2.7%	34,275	72.9%	874,990	9.3%
11	13,595	15,953	17,053	16,450	-603	-3.5%	54	0.3%	593,516	2.8%
12	12,917	13,076	13,303	13,303	0	0.0%	6,096	84.6%	176,229	7.5%
13	18,003	19,248	19,845	43,477	23,632	119.1%	30,114	225.4%	412,974	10.5%
14	12,778	14,219	13,067	12,051	-1,016	-7.8%	-471	-3.8%	57,720	20.9%
15	2,332	2,656	2,737	2,793	56	2.0%	1,628	139.7%	50,175	5.6%
16	0	0	0	0	0	0.0%	-213	-100.0%	85,018	0.0%
17	472	478	507	516	9	1.8%	-776	-60.1%	84,503	0.6%
18	1,423	1,769	2,094	2,260	166	7.9%	612	37.1%	93,459	2.4%
19	5,144	5,745	5,744	5,810	66	1.1%	1,869	47.4%	176,994	3.3%
20	28,391	29,785	34,534	33,532	-1,002	-2.9%	13,897	70.8%	479,305	7.0%
STATE	247,389	272,815	296,323	316,804	20,481	6.9%	113,514	55.8%	5,431,910	5.8%
Growth	19,236	25,426	23,508	20,481						

Large swings in enrollment are a result of reporting changes, not actual campus enrollment changes





Texas Charter School- From Physical Campus Locations

REGION	Operating Campuses	Total Charter Enrollment		Current 2018/19	1-YEAR		% of Total Enrollment	
		2016/17	2017/18		CHANGE	PERCENT	Total Enrollment	PERCENT
1	73	31,778	34,935	38,570	3,635	10.4%	436,115	8.8%
2	13	2,980	3,073	3,382	309	10.1%	103,152	3.3%
3	0	0	0	0	0	0.0%	53,344	0.0%
4	164	62,006	66,850	71,848	4,998	7.5%	1,201,680	6.0%
5	12	2,813	2,823	3,331	508	18.0%	84,066	4.0%
6	13	2,102	2,112	3,024	912	43.2%	201,228	1.5%
7	21	4,340	4,776	4,973	197	4.1%	173,796	2.9%
8	1	52	61	72	11	0.0%	56,113	0.1%
9	0	0	0	0	0	0.0%	37,533	0.0%
10	142	62,752	68,301	71,618	3,317	4.9%	874,990	8.2%
11	79	32,039	36,581	33,794	-2,787	-7.6%	593,516	5.7%
12	17	2,982	3,581	3,526	-55	-1.5%	176,229	2.0%
13	91	26,578	28,507	31,498	2,991	10.5%	412,974	7.6%
14	2	552	589	626	37	6.3%	57,720	1.1%
15	5	1,684	1,573	1,838	265	16.8%	50,175	3.7%
16	4	748	888	844	-44	0.0%	85,018	1.0%
17	5	1,179	1,198	1,196	-2	-0.2%	84,503	1.4%
18	9	3,408	3,981	4,344	363	9.1%	93,459	4.6%
19	18	5,157	5,120	6,062	942	18.4%	176,994	3.4%
20	87	24,992	32,203	36,476	4,273	13.3%	479,305	7.6%
Total	756	268,142	297,152	317,022	19,870	6.7%	5,431,910	5.8%
Change			29,010	19,870				

10,600 fewer students

25,570 more students

17,300 more students

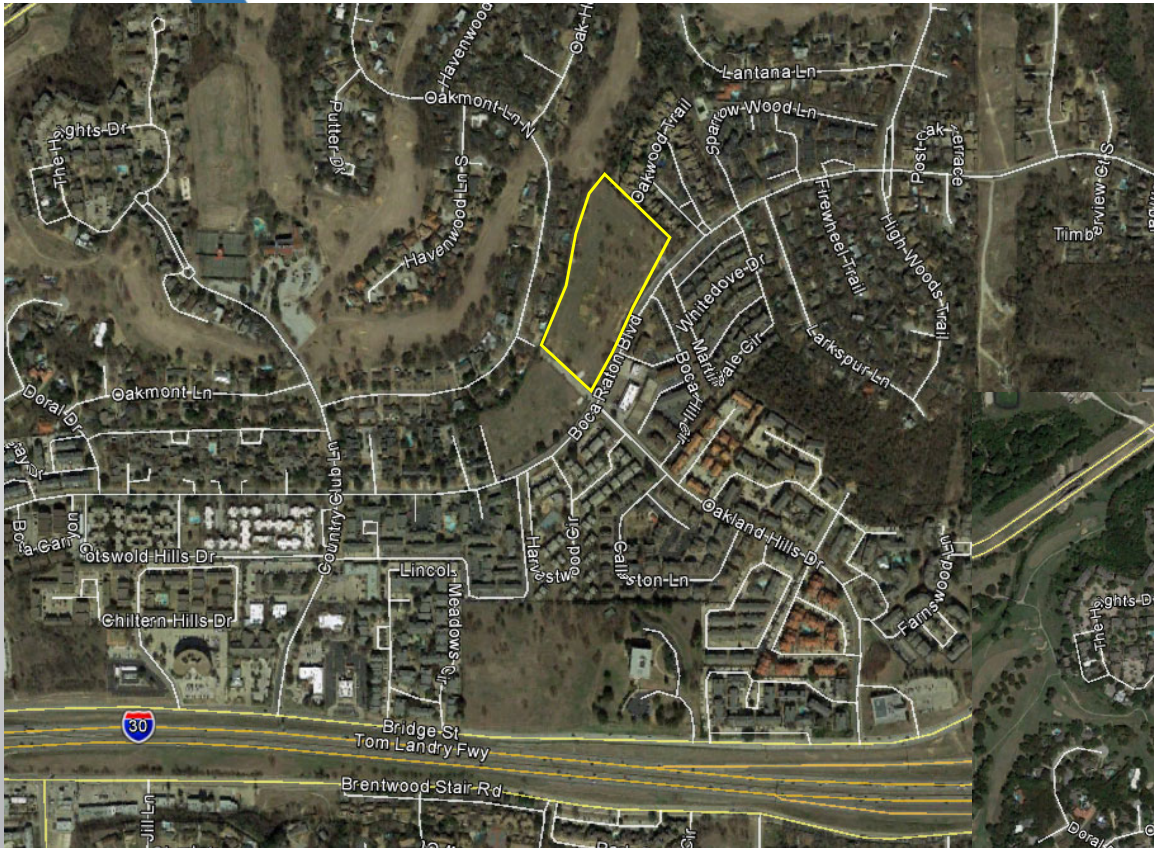
11,900 fewer students



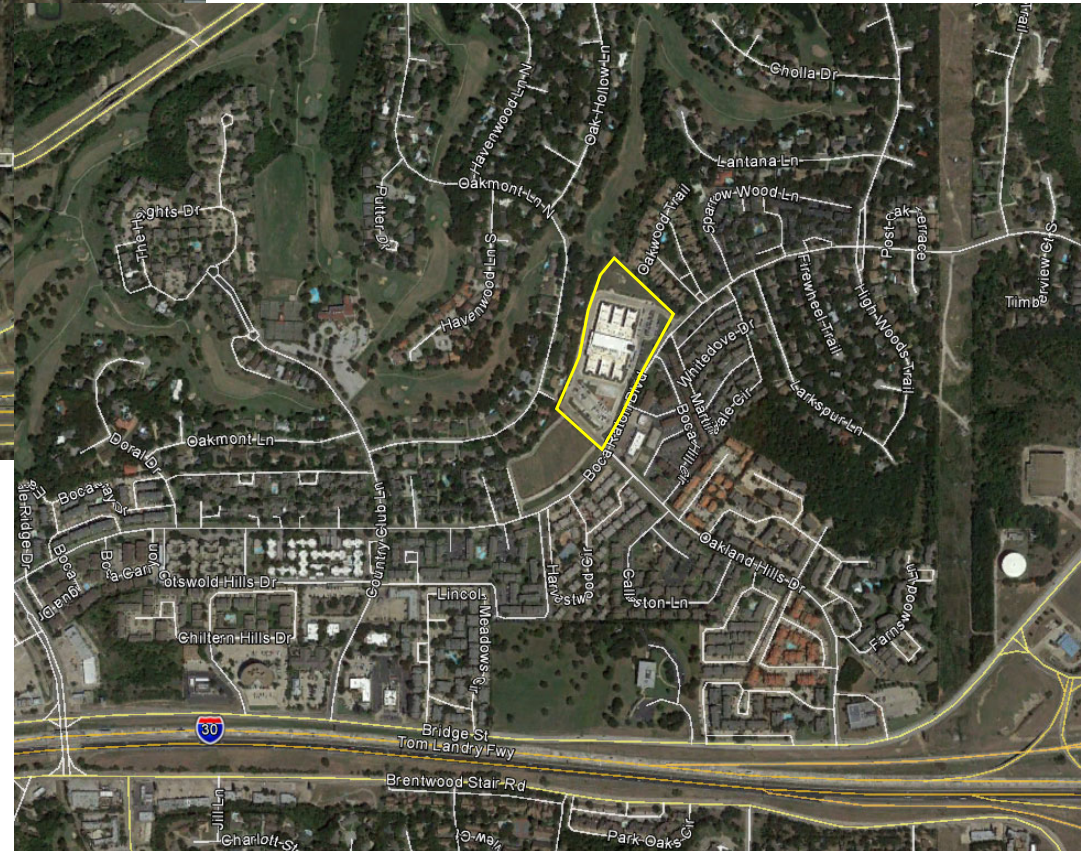


Case Study: Charter School Build Times

January 25th, 2017



September 5th, 2017



International Leadership of Texas- E Fort Worth opened a new campus with 1,166 students in August 2017 with less than 8 months of construction time



Case Study: Charter School Locations



Harmony Science Academy plans to buy the vacant H-E-B building on Valley Mills Drive in front of the former Floyd Casey Stadium site. It will be the school's second Waco campus in a former grocery store building.
Staff photo— Jerry Larson, file

Harmony Public Schools renovated an old H-E-B grocery store into a campus in less than a year

Picture Source: Waco Tribune-Herald

Uplift Ascend Preparatory enrolled 288 students in a temporary location in a shopping center for 4 months until construction finished on their permanent facility. The permanent campus was more than 8 miles south of the temporary location.

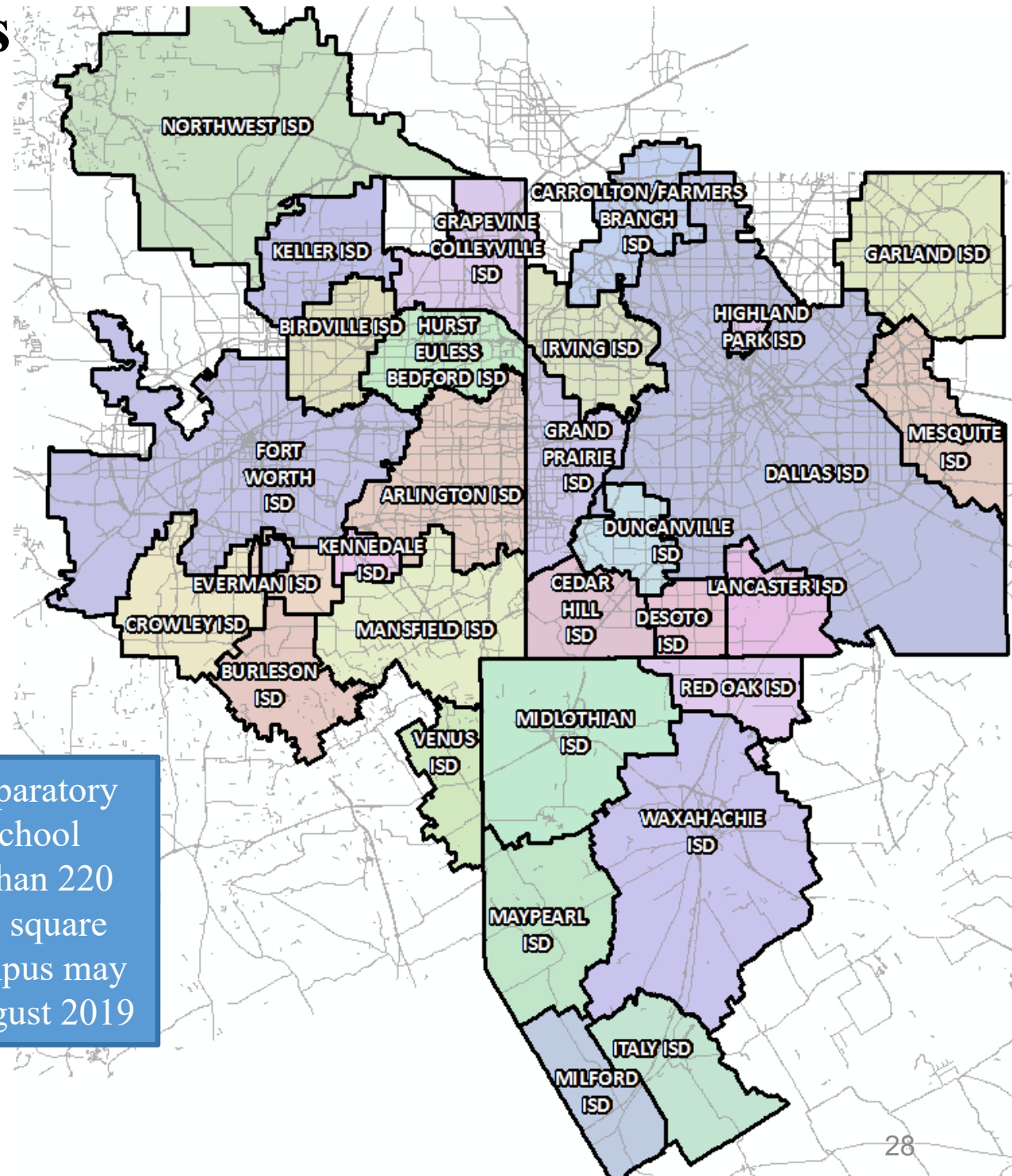


KIPP Destiny enrolls 960 students in PK – 8th grade in a strip center facility in Dallas. This has been their permanent facility since 2013. KIPP opened a HS in 2018/19 in a similar facility with 112 students





District Impacts



In March 2019 UME Preparatory Academy notified 30 school districts spanning more than 220 municipalities and 2,340 square miles that a proposed campus may impact their district in August 2019






Information Request Roadblocks

Login Staff Login En Español

UnidosUS Enroll Search this site



HOUSTON GATEWAY ACADEMY

ELITE COLLEGE PREP ACADEMY

ABOUT HGA CONTACT US

CONTACT

Address
7310 Bowie St.
Houston, TX 77012

Phone
(832) 649-2700

Fax
(713) 649-8268

Email us


Your Name *


Your Email *

Please verify your identity

We are only accepting secure messages at this time, please verify your identity by choosing an option below.

You will not be able to fill out the form until you complete this step.

 Sign in with Google

 Log in with Facebook

Good morning Michelle,

As noted below, there are no documents responsive to your request and the public information requirements in Texas do not require the creation of documents or the preparation of answers to questions or interrogatories. Please let me know if I can be of further assistance.

Warm regards,
Anastasia

Anastasia Korte
Managing Director of Compliance
BASIS.ed
[10130 N. Oracle Road, Suite 210](#)
[Tucson, AZ 85704](#)
O +1.520.219.6000 ext. 109
M +1.520.262.8955
<http://BASISed.com/>



Fri 3/22/2019 5:32 PM

Promesa Academy <info@promesaacademy.org>

Re: Public Information Request

To: Box, Michelle

Action Items

Michelle,

That information will become public as soon as we have a lease signed.

On Fri, Mar 22, 2019 at 6:25 AM Box, Michelle <michelle@tdemographics.com> wrote:

Ambika,

Thank you for your quick reply. Do you know when you anticipate finalizing your site address for your campus?

Michelle Box

Research Manager

Templeton Demographics

Hanley Wood | Metrostudy

michelle@tdemographics.com

From: Dept., Admissions <admissions@umeprep.org>

Sent: Monday, April 15, 2019 2:55 PM

To: Box, Michelle <michelle@tdemographics.com>

Subject: Re: Information Request

Thank you for your email. Can you please tell me who you are and why this information is being requested?

Caralyn Ignatz
Admissions Director
UME Preparatory Academy
214-445-6243 ext 2841





Summary

- Fort Worth's unemployment rate is below 4%.
- Northwest ISD is the fastest growing district in Region 11 over the last 5 years.
- Pecan Square and the Trails of Elizabeth Creek will begin homebuilding in the next 2-3 months.
- The new Curtis Elementary zone has closed more than 500 homes in the last 12 months.
- The future Lance Elementary is expected to open this fall with more than 320 students.
- NISD can expect an increase of approximately 6,700 students during the next 5 years.
- 2023/24 enrollment projection: 30,831 students.
- NISD is projected to enroll 37,815 students for the 2028/29 school year.