

Facilities, Planning and Construction

June 29, 2020

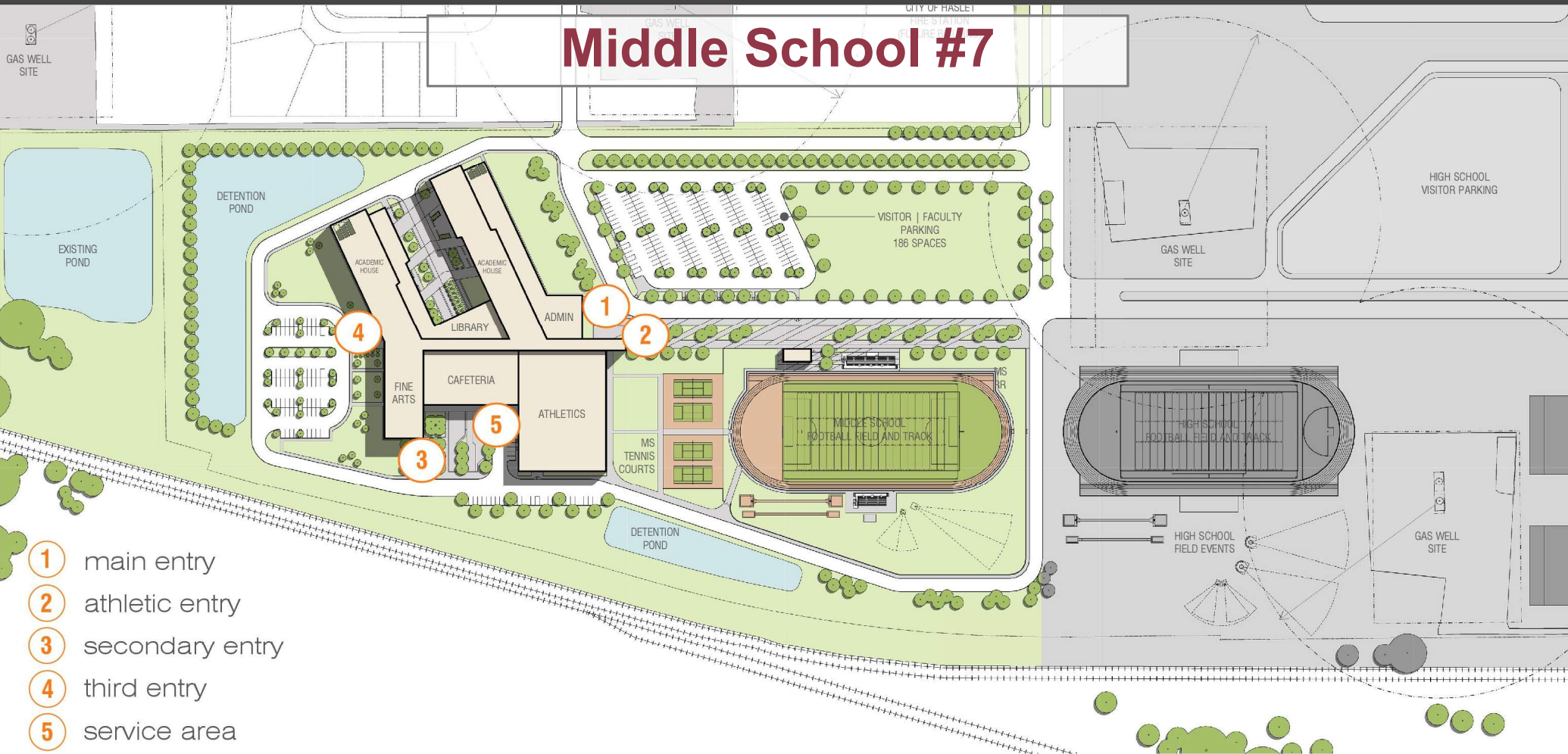


Planning Update:

- Middle School #7



Middle School #7



enlarged site plan



0 40 80 160

glenn | partners

www.nisdtx.org



glenn | partners

















Construction Update:

- Byron Nelson HS Additions/Renovations
- Eaton HS Addition - Phase 2
- NHS PAC
- NISD Aquatic Center
- Haslet Replacement Elementary School
- Middle School Fine Arts Additions – Chisholm Trail, Medlin, Tidwell & Wilson

Byron Nelson HS Addition















V.R. Eaton HS Addition



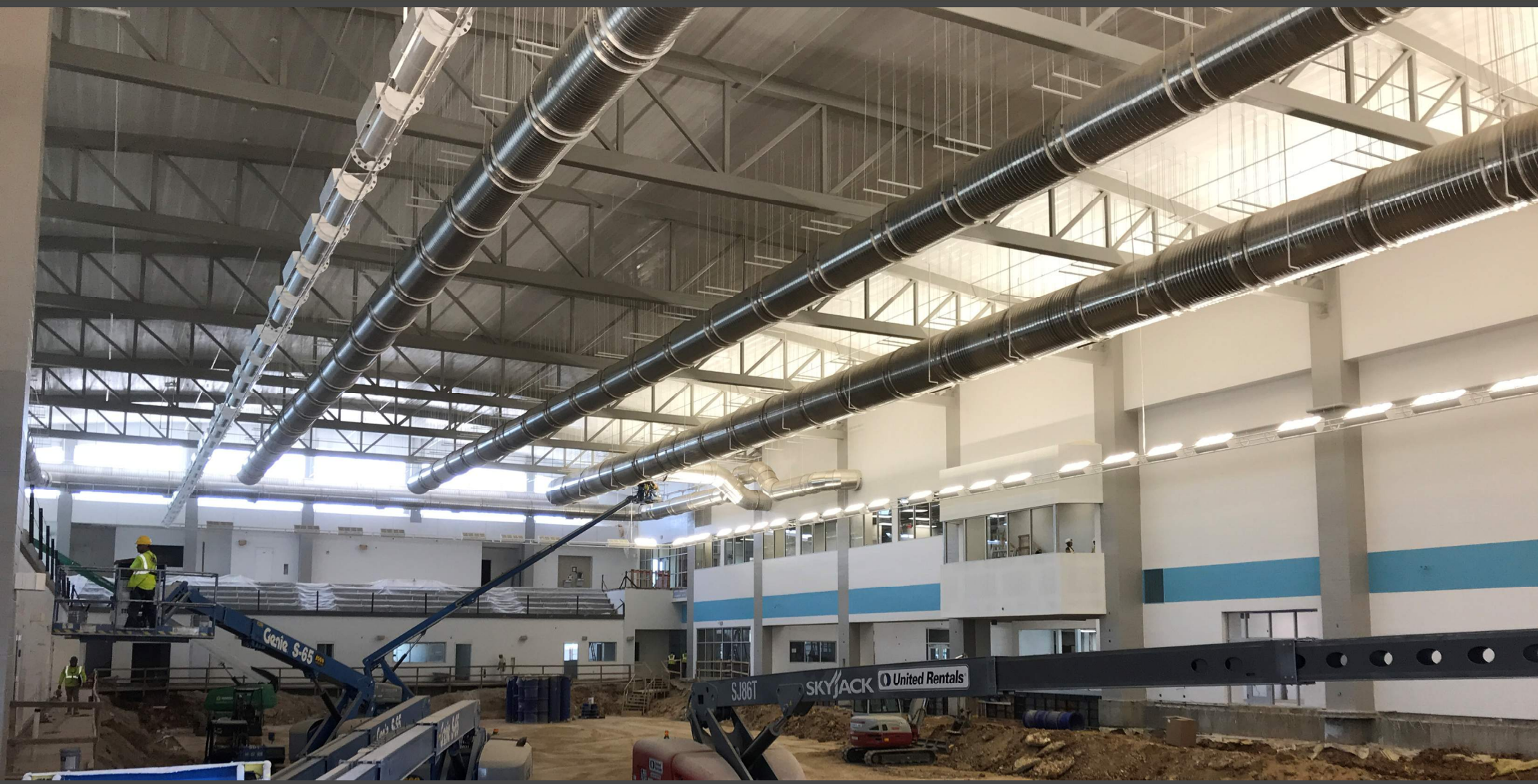




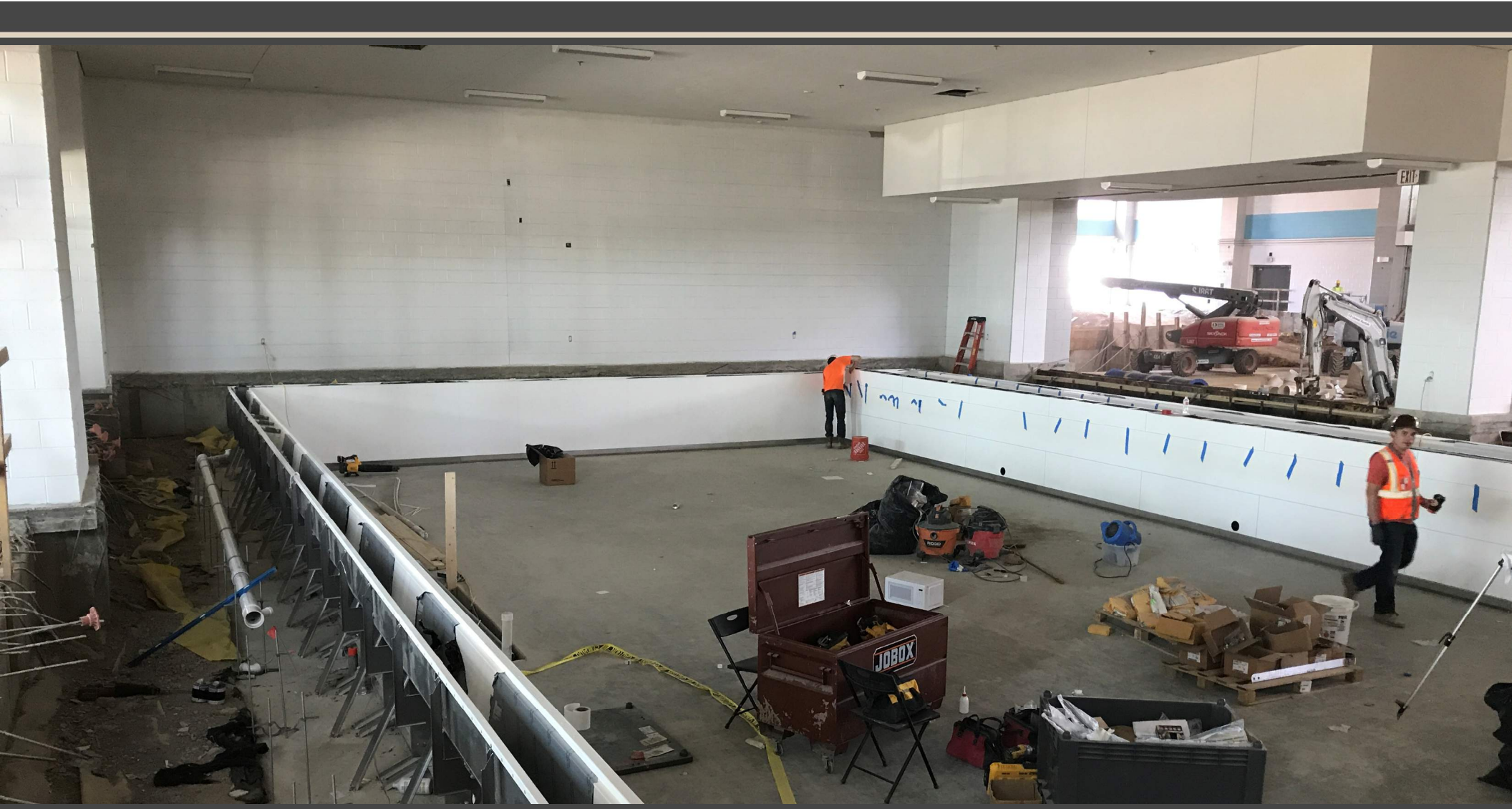
NISD Aquatic Center











Haslet ES Replacement











Chisholm Trail MS – Fine Arts Addition



Medlin MS – Fine Arts Addition



Tidwell MS – Fine Arts Addition



Wilson MS – Fine Arts Addition



